

Police Corporate Data Model (CorDM)

Incident Business Area View

REFERENCE: Police CorDM Incident Business Area View

AUTHOR: Information Standards Team


VERSION NUMBER: 7.1

DATE: 30 April 2010

© NPIA (National Policing Improvement Agency) 2010

All rights reserved. No part of this publication may be reproduced, modified, amended, stored in any retrieval system or transmitted, in any form or by any means, without the prior written permission of the National Policing Improvement Agency or its representative.

Product Control Page

Authors:	Information Standards Team	
Address:	National Policing Improvement Agency New Kings Beam House 22 Upper Ground London SE1 9QY	 mail to: isg@npia.pnn.police.uk

Issue Control:		
Version	Date	Description
Version 1.0	31-07-2003	Publication in CorDM version 1
Version 2.0	31-12-2003	Updated to Version 2 standard
Version 3.0	31-08-2004	Updated to Version 3 standard
Version 4.0	31-03-2005	Updated to Version 4 standard
Version 5.0	30-11-2005	Updated to Version 5 standard
Version 6.0	30-11-2006	Updated to Version 6 standard
Version 7.0	30-11-2007	Updated to Version 7 standard
Version 7.1	30-04-2010	Updated to Version 7.1 standard

1 PURPOSE

This paper provides a data model for the Incident business area within the CorDM Strategic Framework.

2 BACKGROUND

The data models have been developed using business information on the NSPIS Command and Control application (NSPIS C&C), and business input from South Yorks.

3 DATA MODELLING NOTES

Five data models have been developed for this business area;

- Duty Management,
- Equipment Allocation
- Incident Handling
- Incident Report
- Person In Incident

Planned Incidents

Planned Incidents, where it was known in advance that an event was going to take place e.g. a football match, have been modelled using the concept of contingency plan. Generic Contingency Plan covers the actions to be taken in the event of a football match for example. Once the plan is put into operation an Incident will be created and the actions identified in the plan carried out.

Incident Resources

There is an overlap between HR and Incident in the allocation of resources. It has been assumed that the data within the Shift and Duty classes will be available from HR. Within the Duty Management data model is the functionality to record the availability of the Deployable Resource (DR) through the DR Status class. It should be noted that the plan within Duty may not have shown a resource as on-duty, but that during the course of an incident a resource may be booked in order to meet a need. DR Status contains the current and historic status for a resource.

Deployable Resource Relationship provides the functionality to group together DRs e.g. mobile unit can contain one or more police workers, and therefore one DR can cover a number of individual DRs linked through DR Relationship.

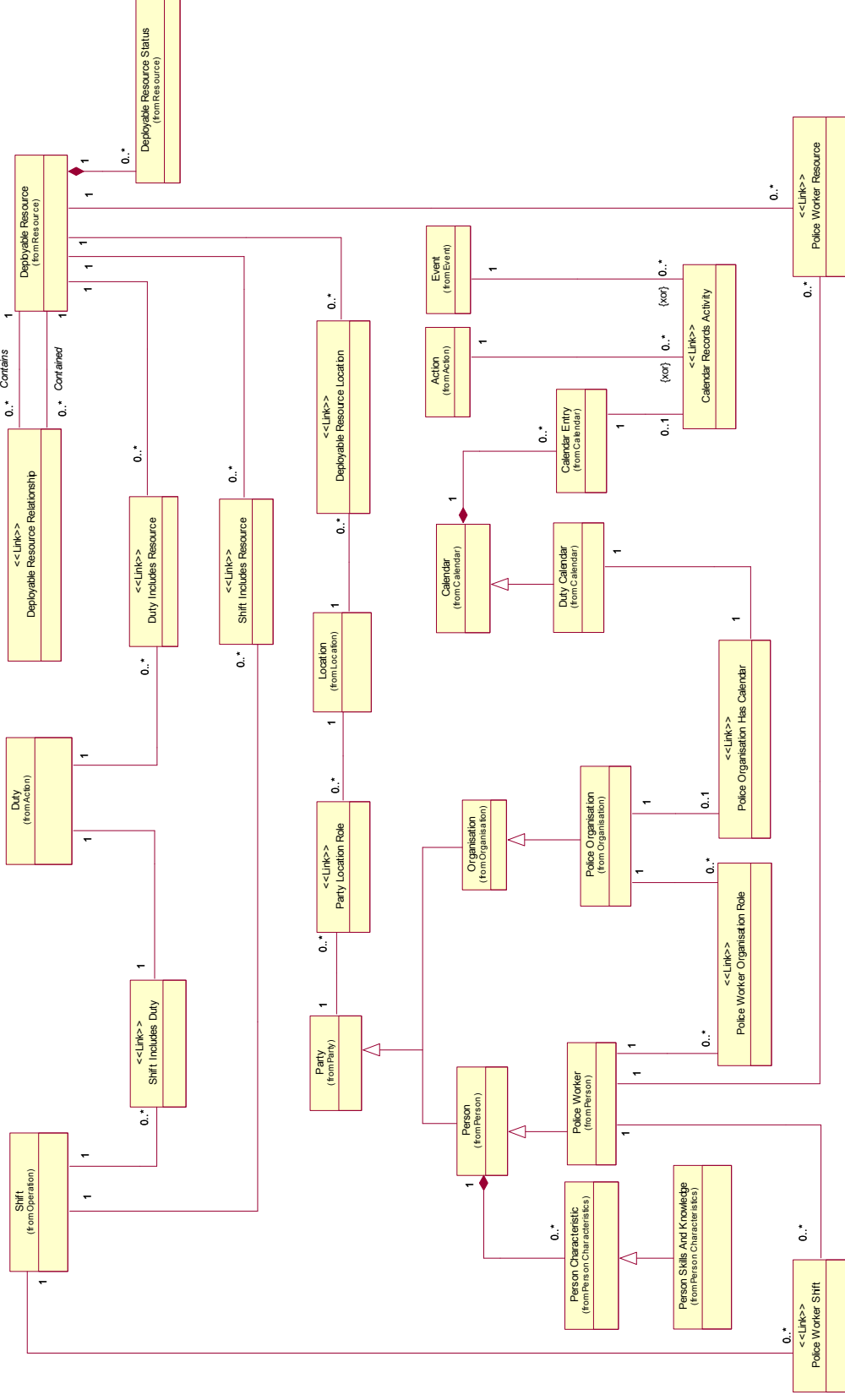


Figure 1: Duty Management

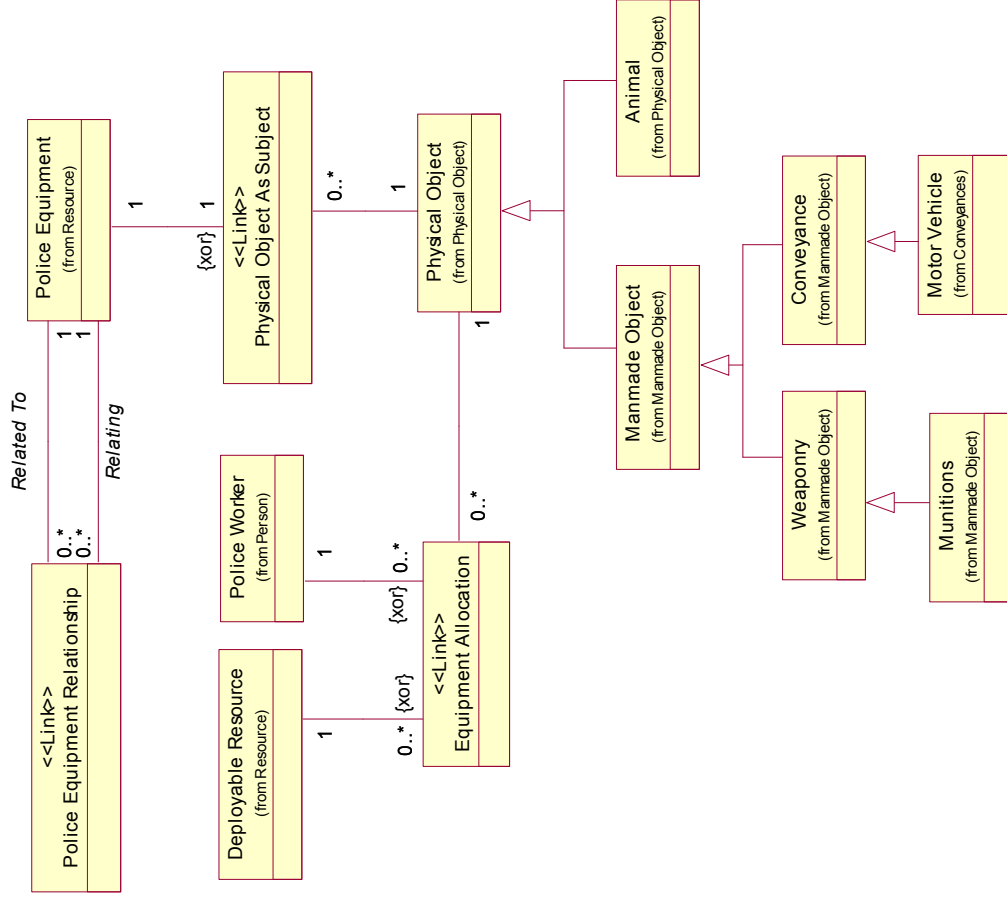


Figure 2: Equipment Allocation

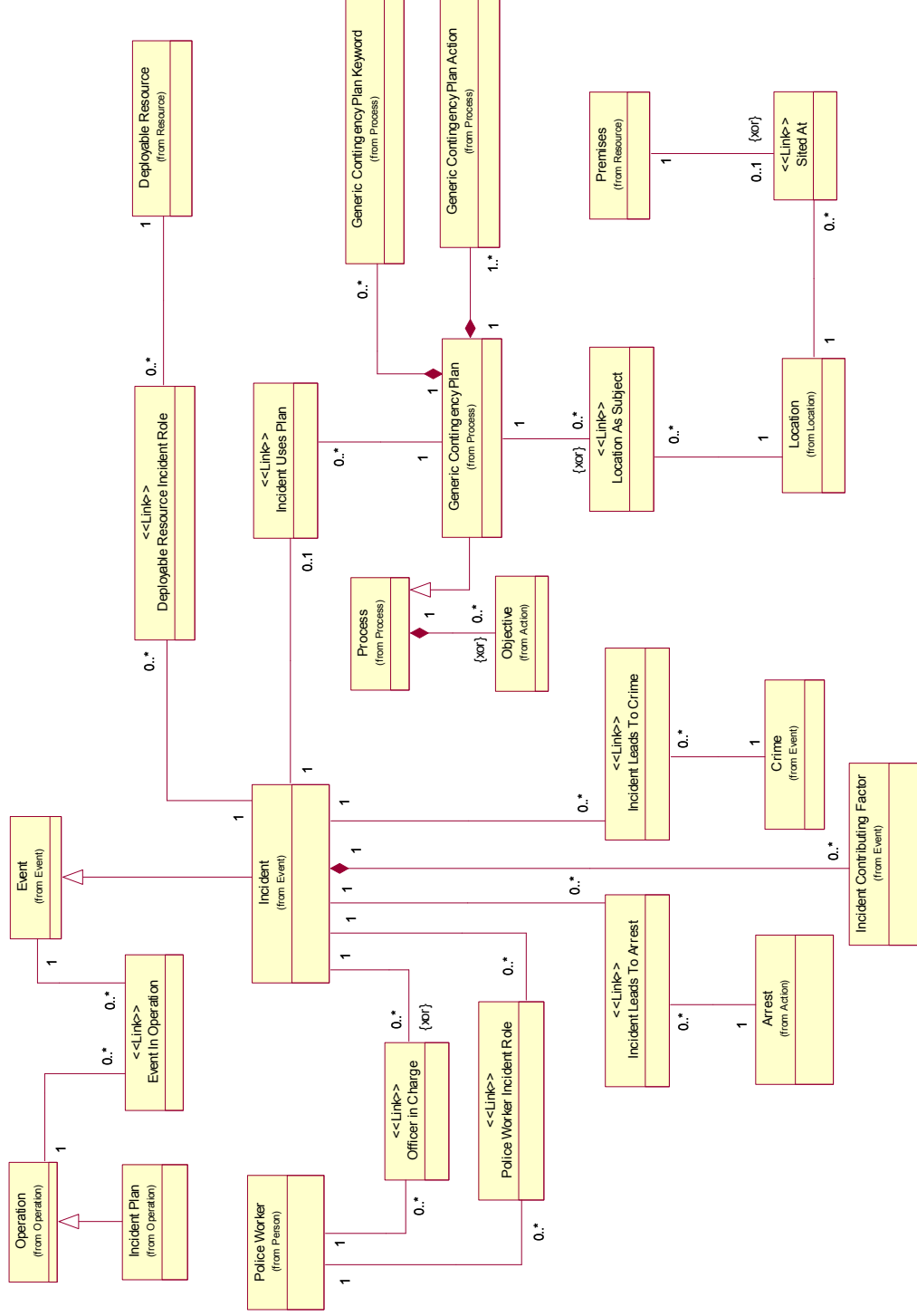


Figure 3: Incident Handling

NOT PROTECTIVELY MARKED
Incident Business Area View

CorDM V7.1

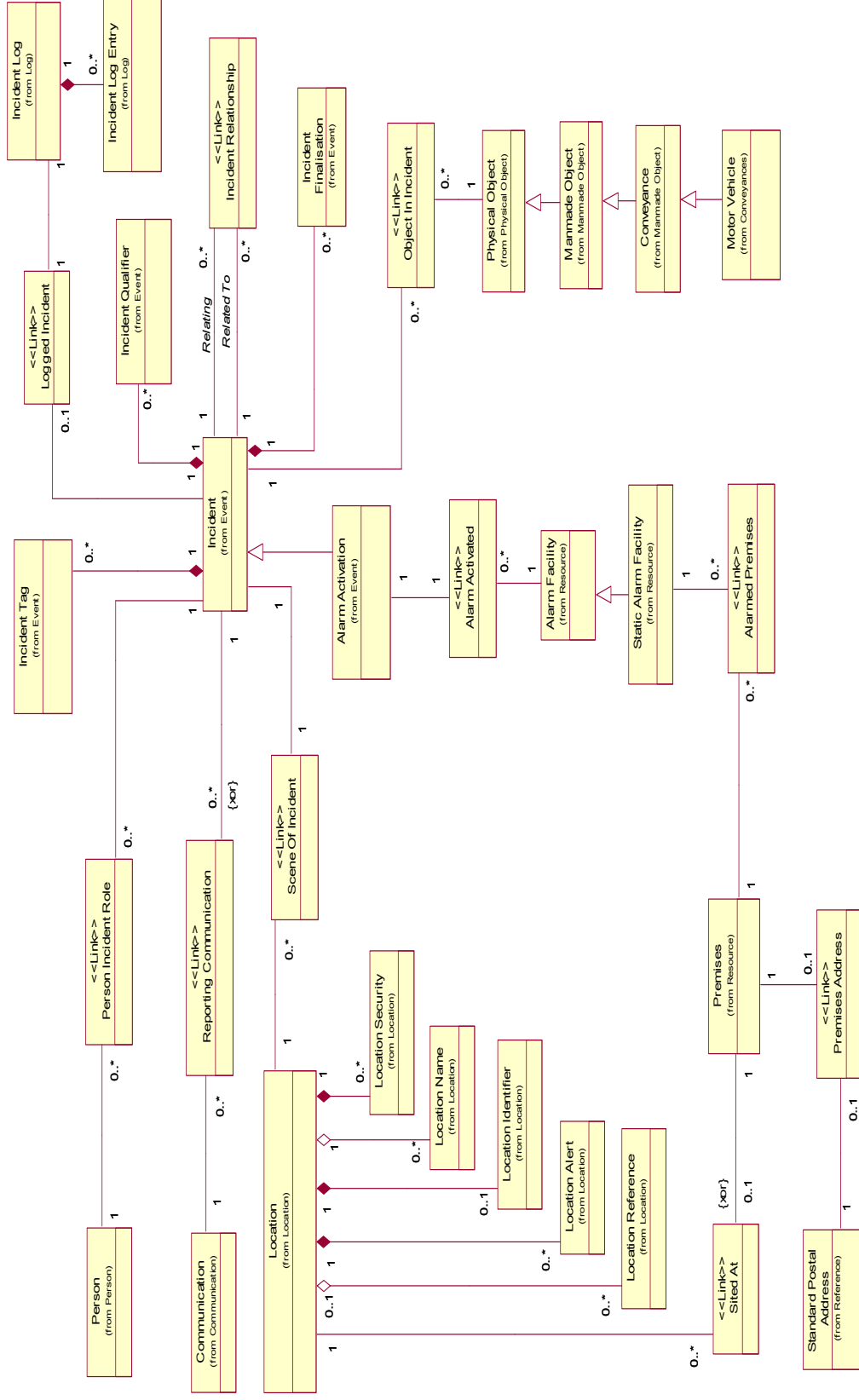


Figure 4: Incident Report

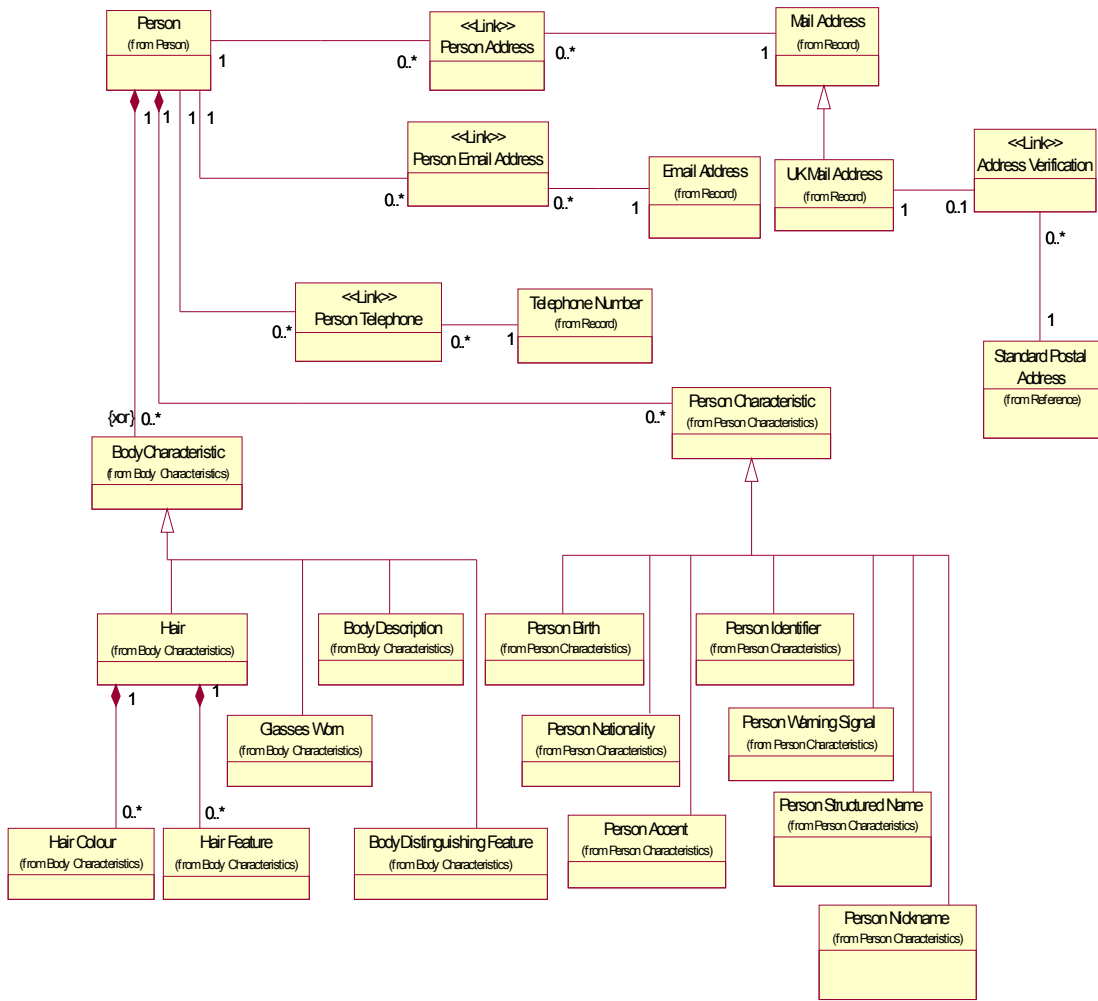


Figure 5: Person In Incident