

Police Corporate Data Model (CorDM)

Patrol Business Area View

REFERENCE: Police CorDM Patrol Business Area View

AUTHOR: Information Standards Team


VERSION NUMBER: 7.1

DATE: 30 April 2010

© NPIA (National Policing Improvement Agency) 2010

All rights reserved. No part of this publication may be reproduced, modified, amended, stored in any retrieval system or transmitted, in any form or by any means, without the prior written permission of the National Policing Improvement Agency or its representative.

Product Control Page

Authors:	Information Standards Team	
Address:	National Policing Improvement Agency New Kings Beam House 22 Upper Ground London SE1 9QY	 mail to: isg@npia.pnn.police.uk

Issue Control:		
Version	Date	Description
Version 1.0	31-07-2003	Publication in CorDM version 1
Version 2.0	31-12-2003	Updated to Version 2 standard
Version 3.0	31-08-2004	Updated to Version 3 standard
Version 4.0	31-03-2005	Updated to Version 4 standard
Version 5.0	30-11-2005	Updated to Version 5 standard
Version 6.0	30-11-2006	Updated to new PITO template
Version 7.0	30-11-2007	Updated to Version 7 standard
Version 7.1	30-04-2010	Updated to Version 7.1 standard

1 PURPOSE

This paper provides a model of the functional area of Patrol within the CorDM Strategic Framework

2 BACKGROUND

The model for Patrol has been developed using the information contained in previous versions of the Function Hierarchy and on business input from Surrey Police. The scope of the model covers the equipping and briefing of deployable resources prior to patrol, allocation of deployable resources to patrol areas and the output of intelligence information resulting from the patrol activity.

3 DATA MODELLING NOTES

The model is presented in a single diagram.

NOT PROTECTIVELY MARKED
Patrol Business Area View

CorDM V7.1

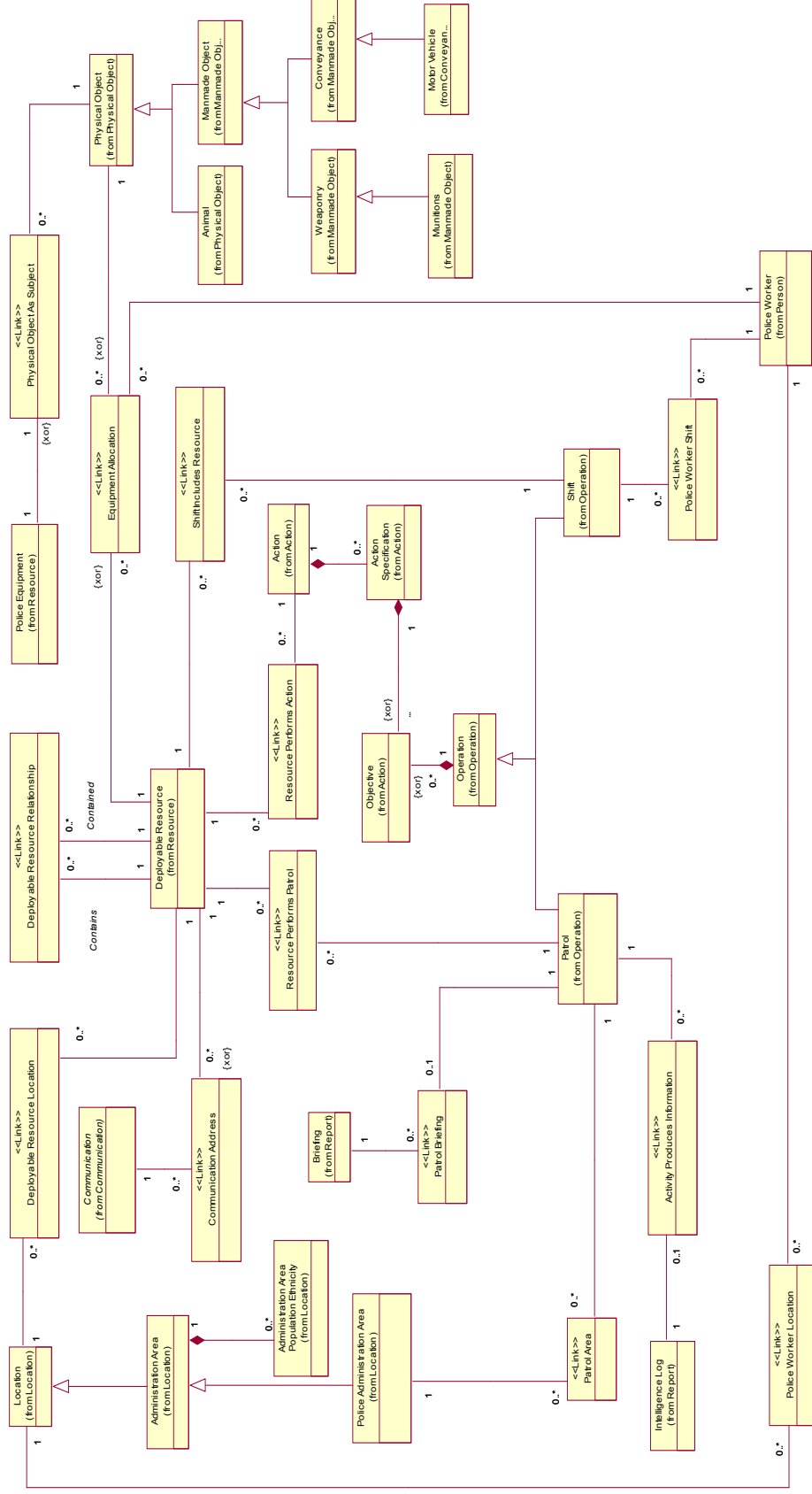


Figure 1: Patrol