

Police Corporate Data Model (CorDM)

Public Protection Business Area View

REFERENCE: Police CorDM Public Protection Business Area
View

AUTHOR: Information Standards Team


VERSION NUMBER: 7.1

DATE: 30 April 2010

© NPIA (National Policing Improvement Agency) 2010

All rights reserved. No part of this publication may be reproduced, modified, amended, stored in any retrieval system or transmitted, in any form or by any means, without the prior written permission of the National Policing Improvement Agency or its representative.

Product Control Page

Authors:	Information Standards Team	
Address:	National Policing Improvement Agency New Kings Beam House 22 Upper Ground London SE1 9QY	 mail to: isg@npia.pnn.police.uk

Issue Control:		
Version	Date	Description
Version 1.0	31-07-2003	Publication in CorDM version 1
Version 2.0	31-12-2003	Updated to Version 2 standard
Version 3.0	31-08-2004	Updated to Version 3 standard
Version 4.0	31-03-2005	Updated to Version 4 standard
Version 5.0	30-11-2005	Updated to Version 5 standard
Version 6.0	30-11-2006	Updated to new PITO template
Version 7.0	30-11-2007	Updated to Version 7 standard
Version 7.1	30-04-2010	Updated to Version 7.1 standard

1 PURPOSE

The purpose of this paper is to provide supporting information for the Violent and Sex Offenders registration business area model.

2 BACKGROUND

Violent and Sex Offenders are required to be tracked. By definition these persons will have a criminal record or track record and the restriction on their activities may be the subject of a court order. The police need to know their whereabouts and the restriction that has been placed on their activities.

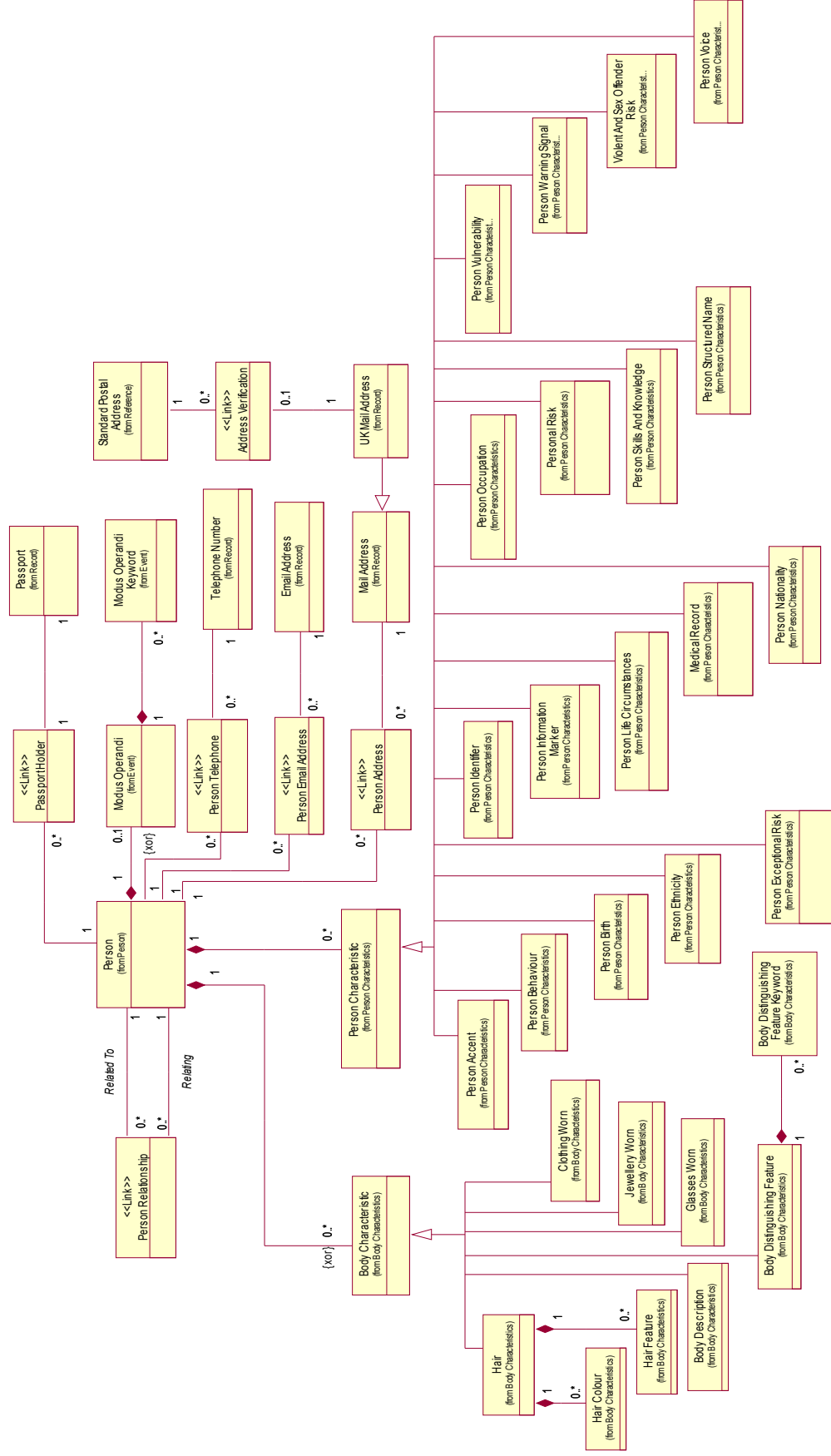
The title refers to violent & sex offenders but the data required also covers dangerous persons.

3 DATA MODELLING NOTES

A large amount of the data required about violent and sex offender persons is included in the Person structure.

There is little process involved in this area as this is mainly concerned with record keeping and not with the operational control of the restricted persons and their activities.

Figure 1 shows the Person group of data.



3.1 Figure 1: Public Protection Person

