

Police Corporate Data Model (CorDM)

Arrest and Detain Business Area View

REFERENCE: Police CorDM Arrest and Detain Business Area
View

AUTHOR: Information Standards Team

VERSION NUMBER: 7.0

DATE: 30 November 07

© NPIA (National Policing Improvement Agency) 2007

All rights reserved. No part of this publication may be reproduced, modified, amended, stored in any retrieval system or transmitted, in any form or by any means, without the prior written permission of the National Policing Improvement Agency or its representative.

Product Control Page

Authors:	Information Standards Team	
Address:	National Policing Improvement Agency New Kings Beam House 22 Upper Ground London SE1 9QY	☎ 020 8358 5735 ✉ mail to: isg@npia.pnn.police.uk

Issue Control:		
Version	Date	Description
Version 1.0	31-07-2003	Publication in CorDM version 1
Version 2.0	31-12-2003	Updated to Version 2 standard
Version 3.0	31-08-2004	Updated to Version 3 standard
Version 4.0	31-03-2005	Updated to Version 4 standard
Version 5.0	30-11-2005	Updated to Version 5 standard
Version 6.0	30-11-2006	Updated to new PITO template
Version 7.0	30-11-2007	Updated to Version 7 standard

1 PURPOSE

This model covers the data model and object catalogue for the Police functions of Arrest and Detain. The strategic model documents Arrest and Detain as separate business activities to take into account the circumstances when an arrest is not necessarily followed by a period of detention.

2 BACKGROUND

The detention function has been broken down into core business activities such as dealing with prisoner searches, property, taking samples, photos and fingerprints, and disposal of the person and the offence(s).

The main basis for the scope of the modelling is the NSPIS Custody application.

The exceptional risk data has been modelled on a form that is to be replaced. The form was a national form used by both the prison service and the police allowing the identification of a contact officer if further details about the exceptional risk were required.

Interview and Section 18 Search related data, although included in NSPIS Custody, are dealt with in the CorDM Crime and Forensics model.

3 DATA MODELLING NOTES

The model is presented using a number of diagrams as follows:

Figure No	Title	Notes
1	Arrest	Shows the Arrest with the roles played by people and links to other activities.
2	Detainee Disposal	This diagram shows the options for disposing of the detainee (see Offence Disposal diagram for dealing with the offences)
3	Detainee Searches	Shows the detail of searches carried out on a detainee.
4	Detainee Activities	This diagram shows the top-level activities that are performed in detention in their approximate order. Further detail regarding roles for these activities, where relevant, is provided in other diagrams.

NOT PROTECTIVELY MARKED

CorDM V7 **Arrest and Detain Business Area View**

Figure No	Title	Notes
5	Fingerprints and Photos	Shows the fingerprinting and photographing authorisation along with the outputs.
6	Offence Disposal	This diagram shows the data produced when dealing with the charging, cautioning, etc. of a detainee.
7	Other Detention Activities	Groups together a number of detention activities not shown on other diagrams.
8	Overview	Gives an overview of the scope of Detention activities covered in the model. Each area is presented in greater detail on other models. Note that the model does not imply any order to the activities involved.
9	Person Detainee As	Covers that range of data that is likely to be recorded for a detainee. However, this is for guidance only – the whole Person hierarchy is available to the business area as required.
10	Police Bail	Expands on police bail and includes the conditions and roles involved in this area.
11	Prisoner Escort	Shows the parties involved in escorting persons to court or prison.
12	Property	Expands on managing the prisoner's property including removal, recording and storing of items and the subsequent movement and return of such items.
13	Samples	This diagram shows the sample taking activity with the roles played by people and the outputs.

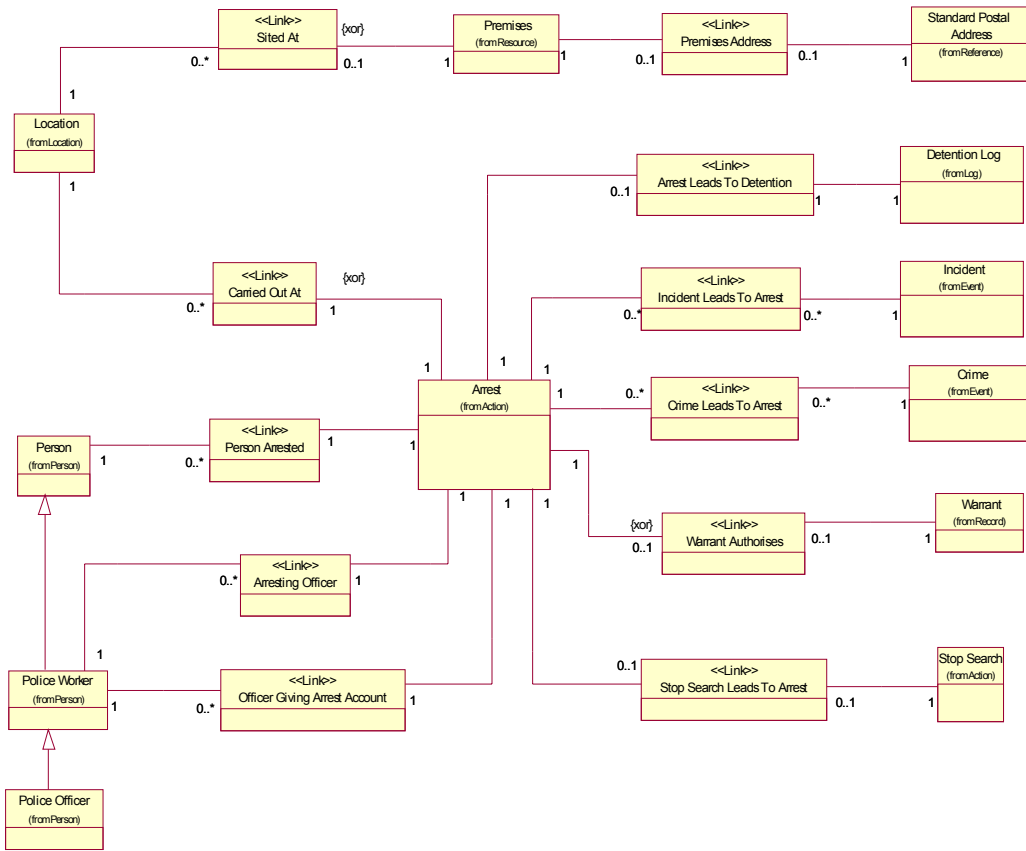


Figure 1: Arrest

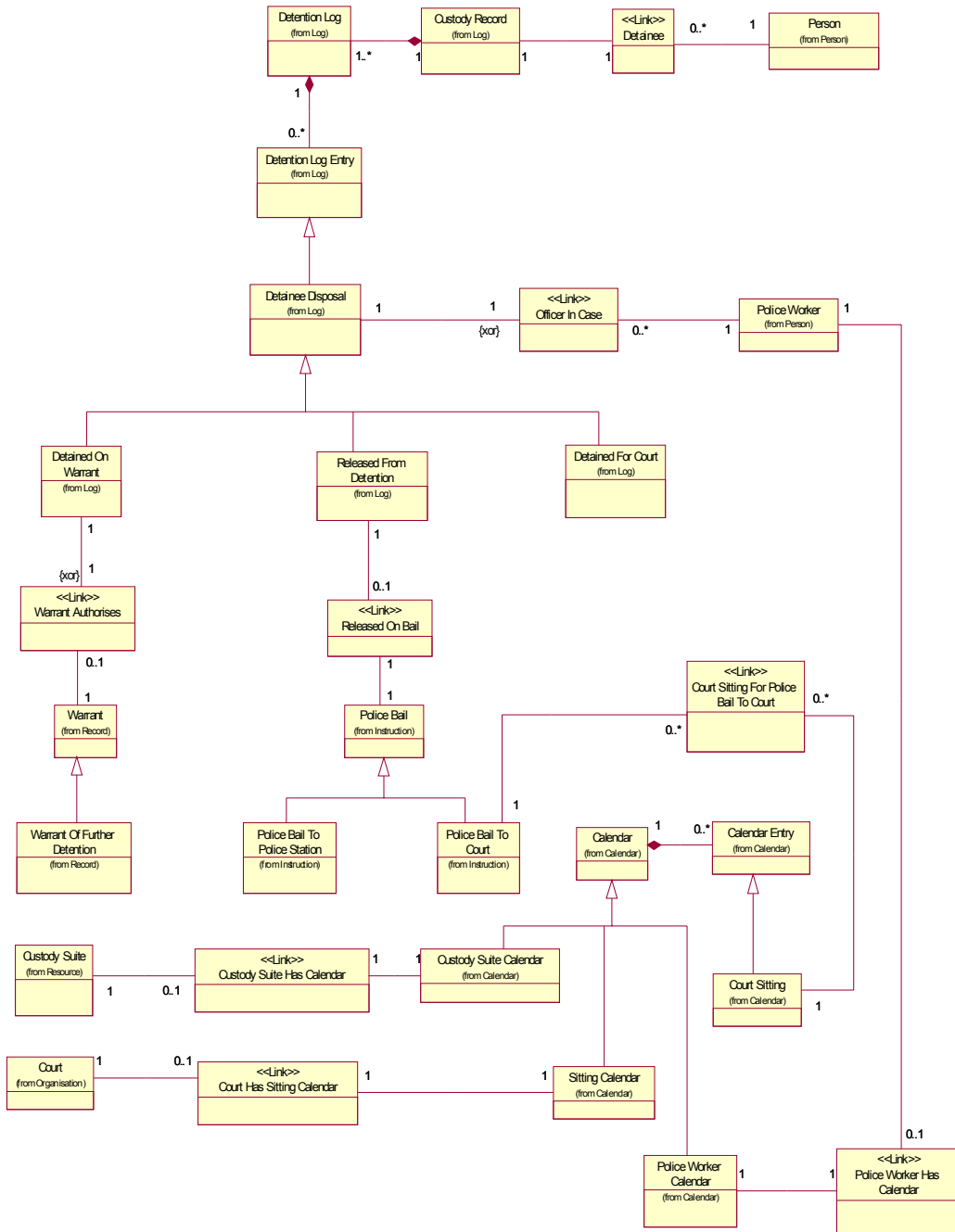


Figure 2: Detainee Disposal

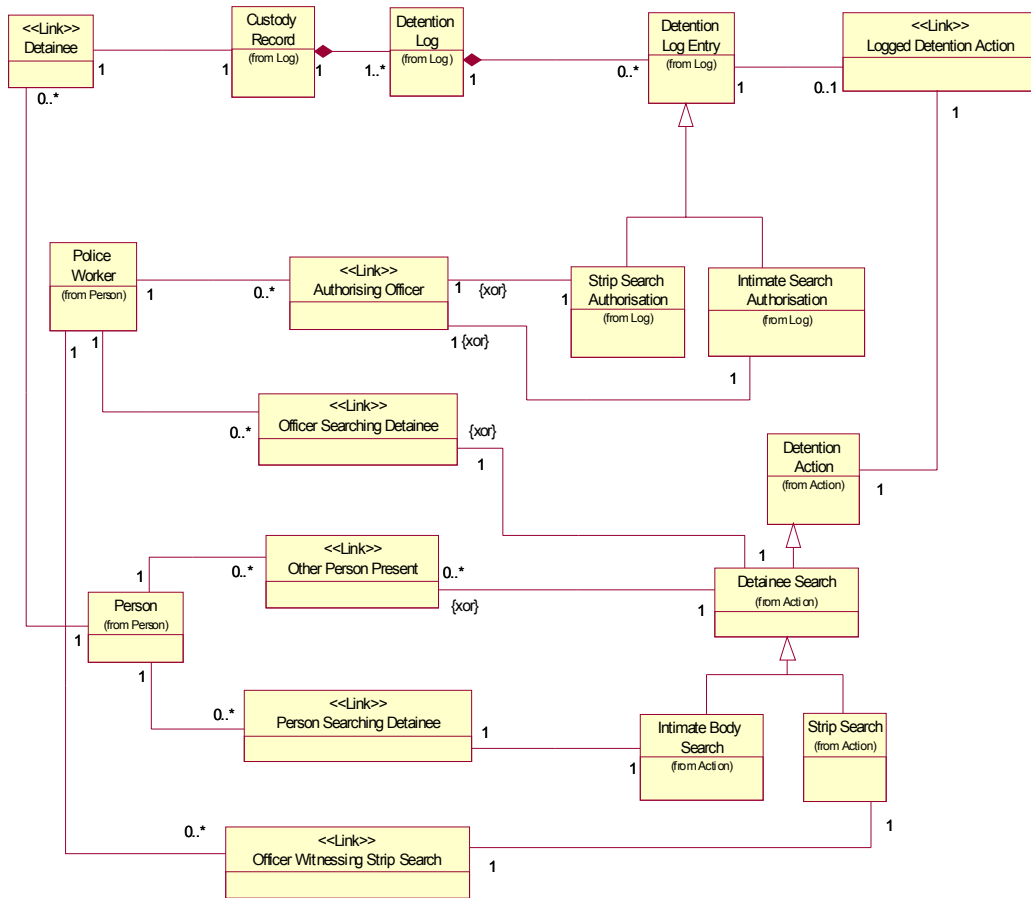


Figure 3: Detainee Searches

Arrest and Detain Business Area View

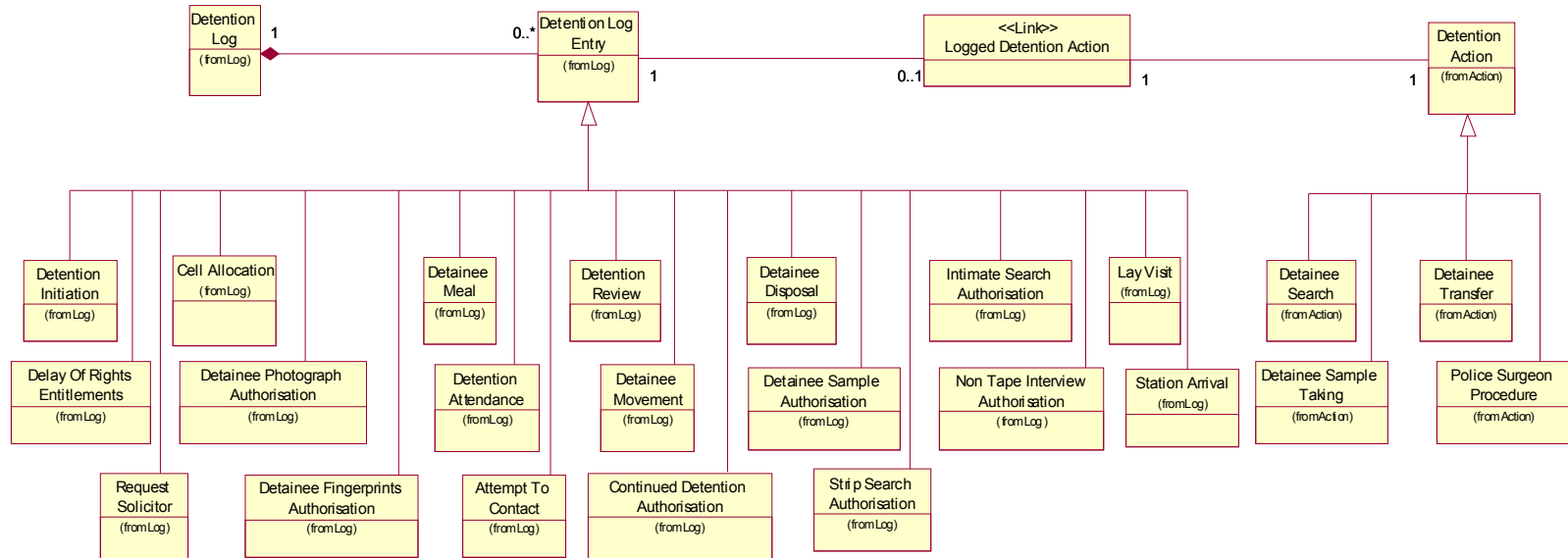


Figure 4: Detention Activities

Arrest and Detain Business Area View

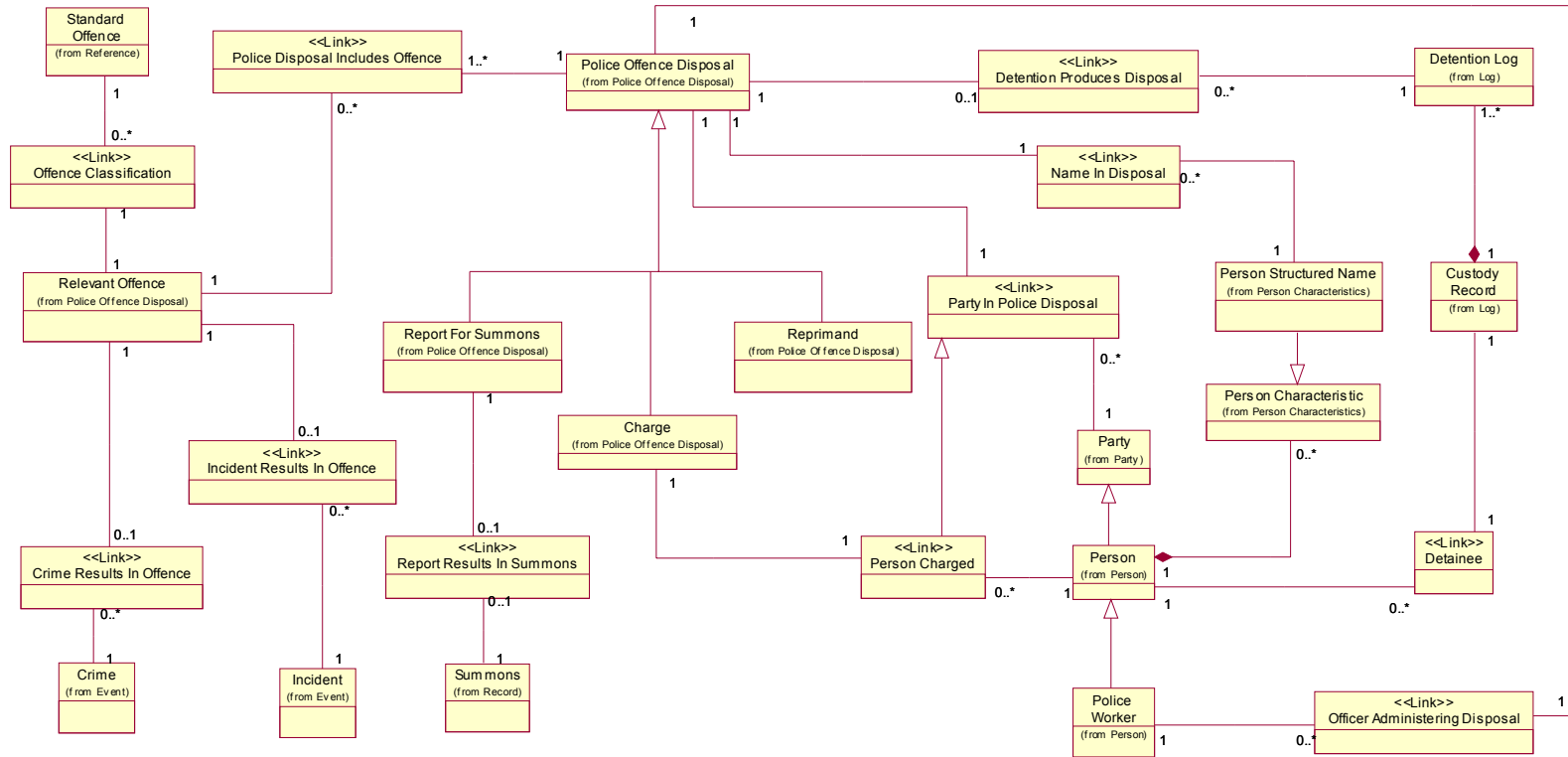


Figure 6: Offence Disposal

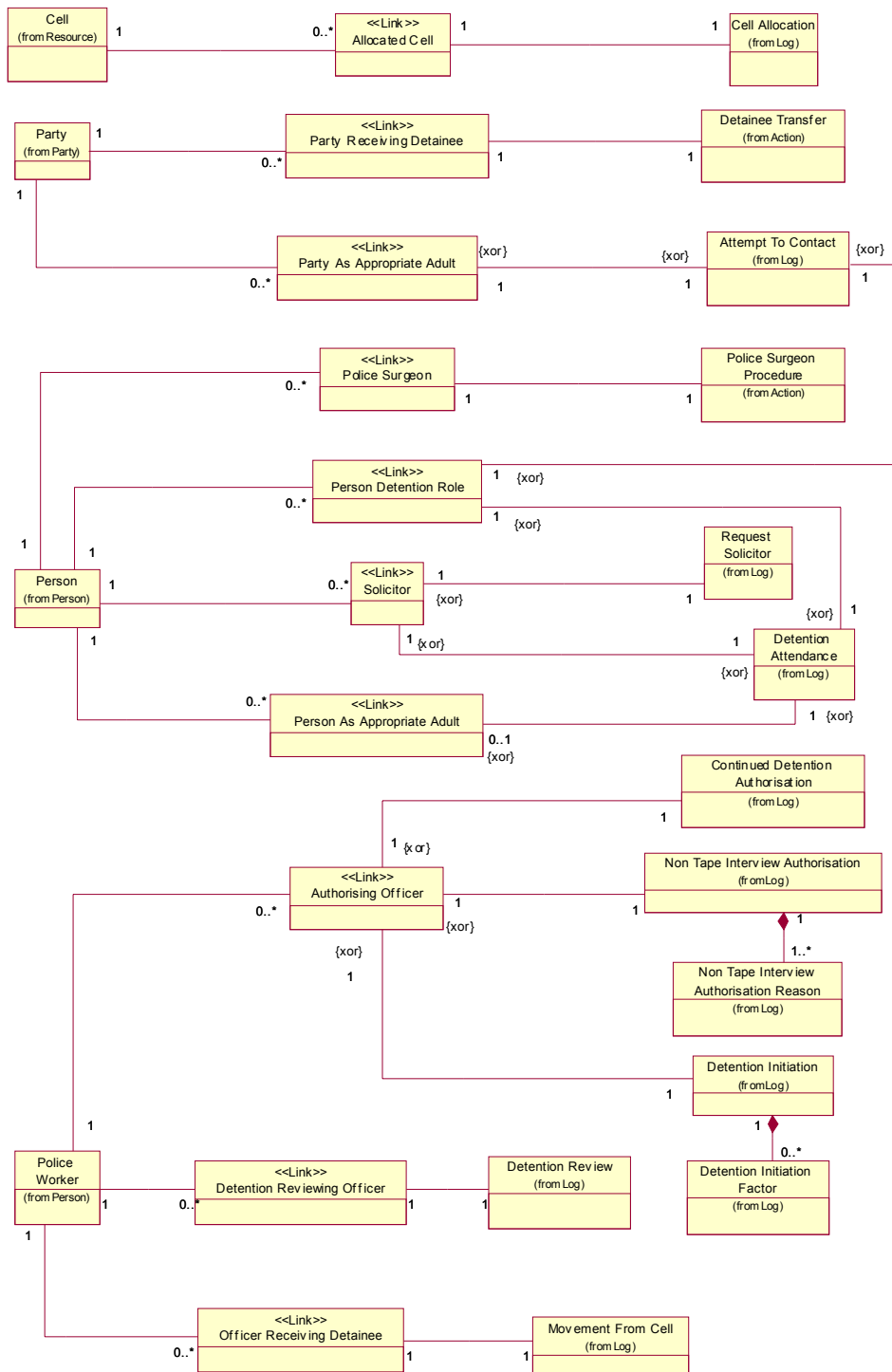


Figure 7: Other Detention Activities

Arrest and Detain Business Area View

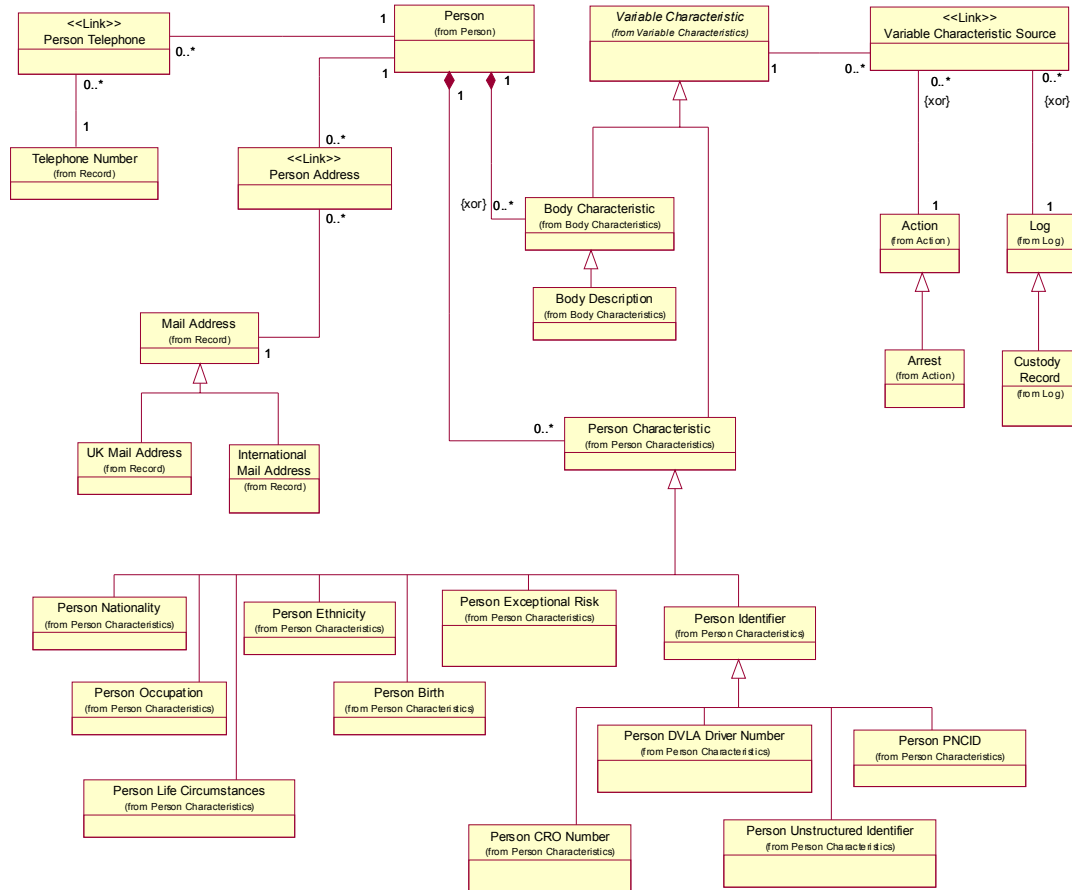


Figure 9: Person As Detainee

NOT PROTECTIVELY MARKED
Arrest and Detain Business Area View

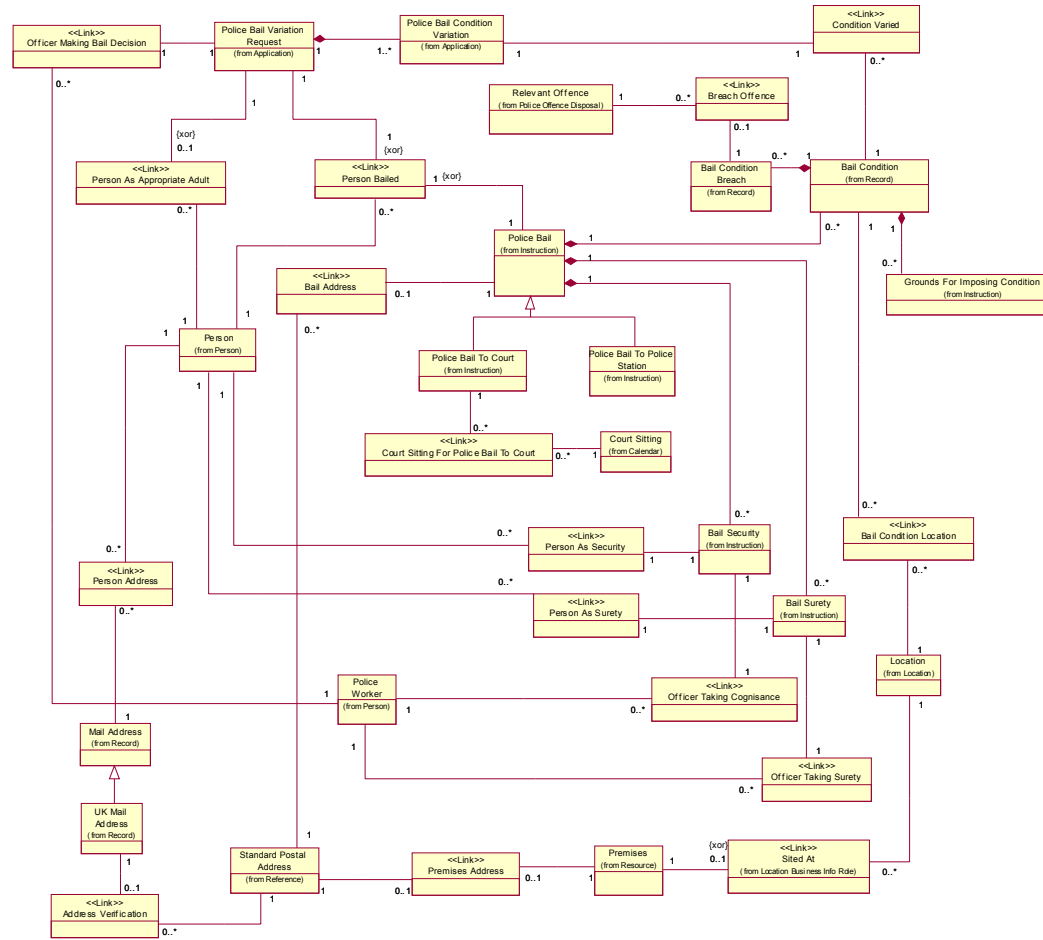


Figure 10: Police Bail

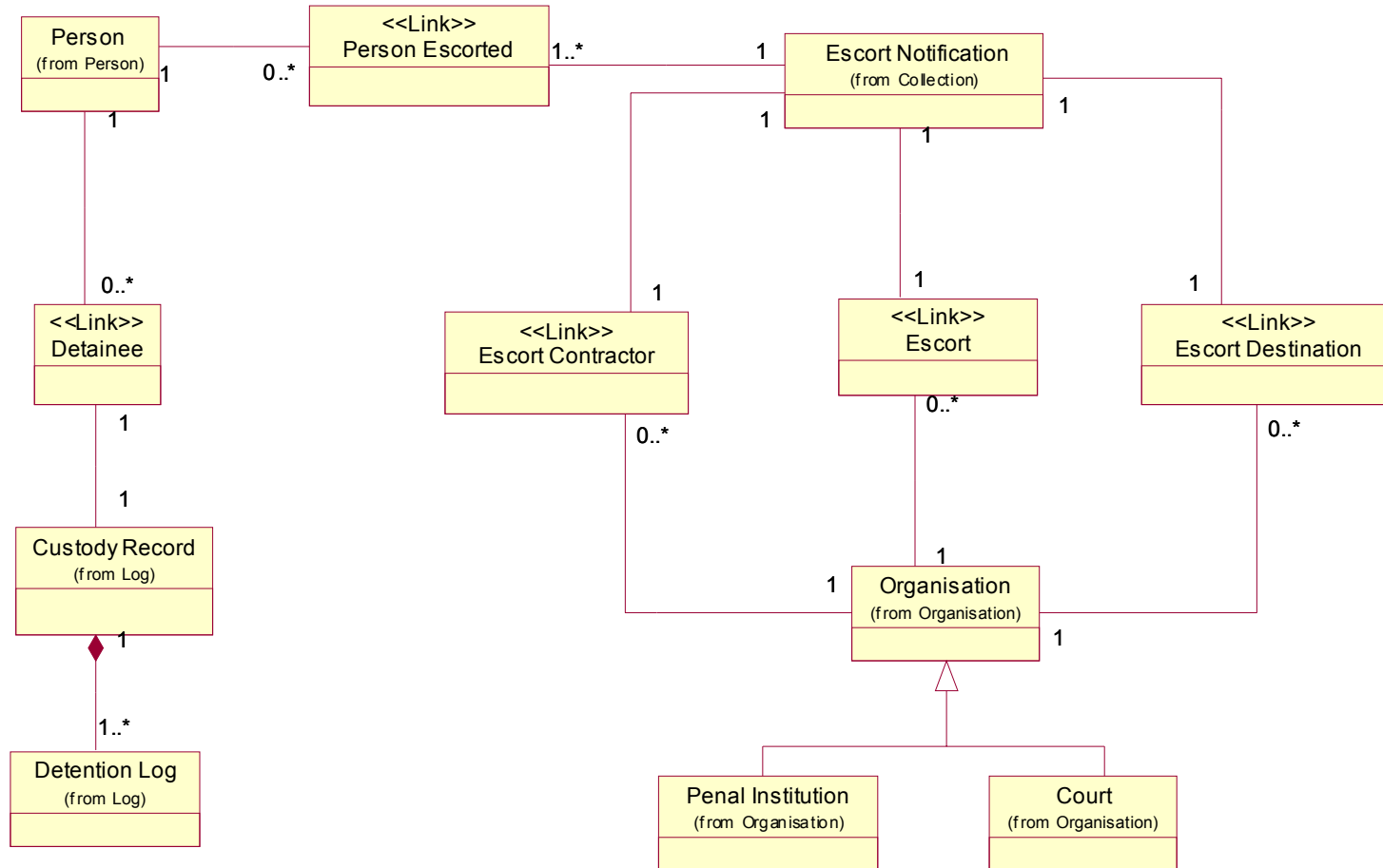


Figure 11: Prisoner Escort

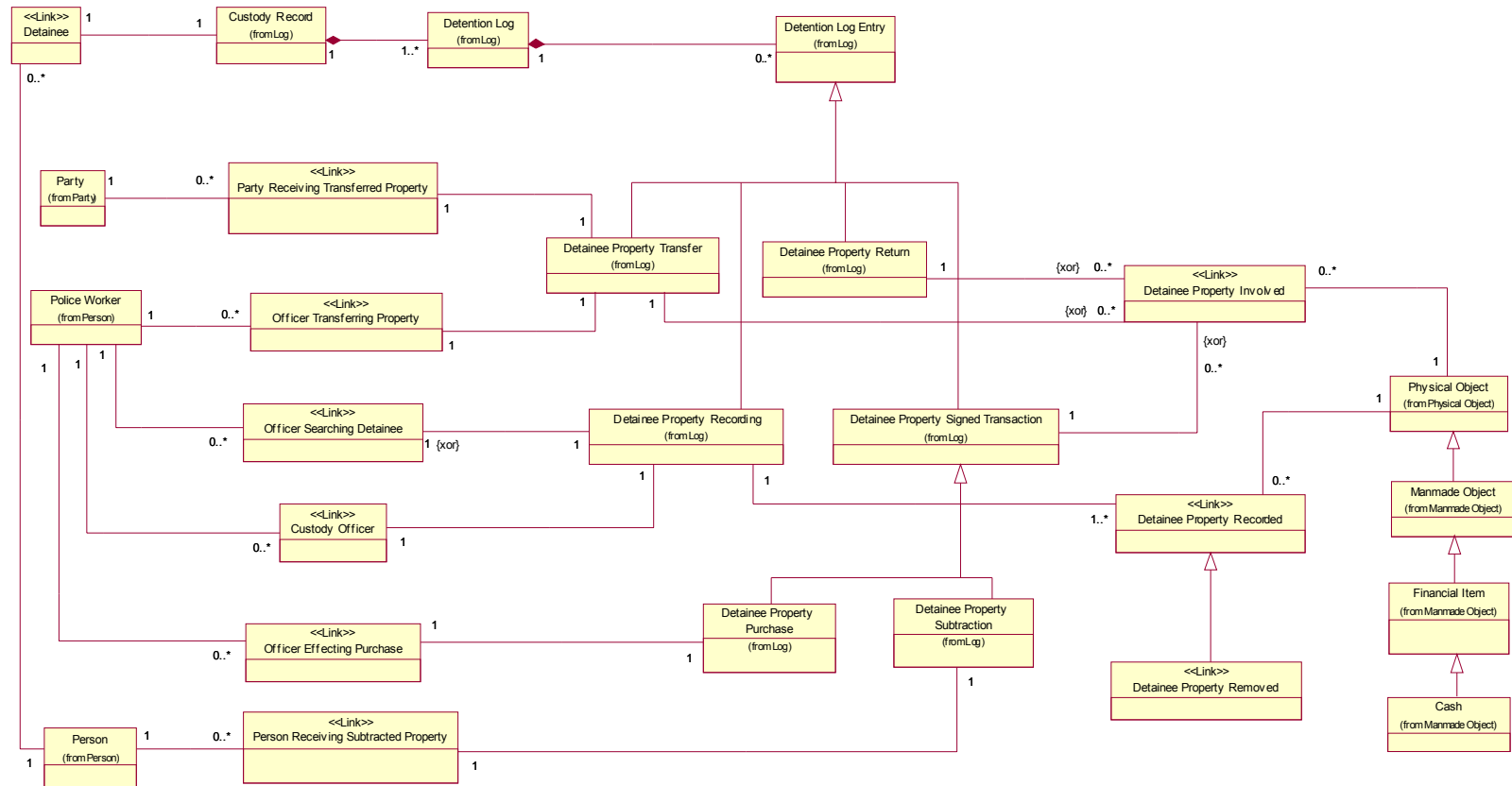


Figure 12: Property

Arrest and Detain Business Area View

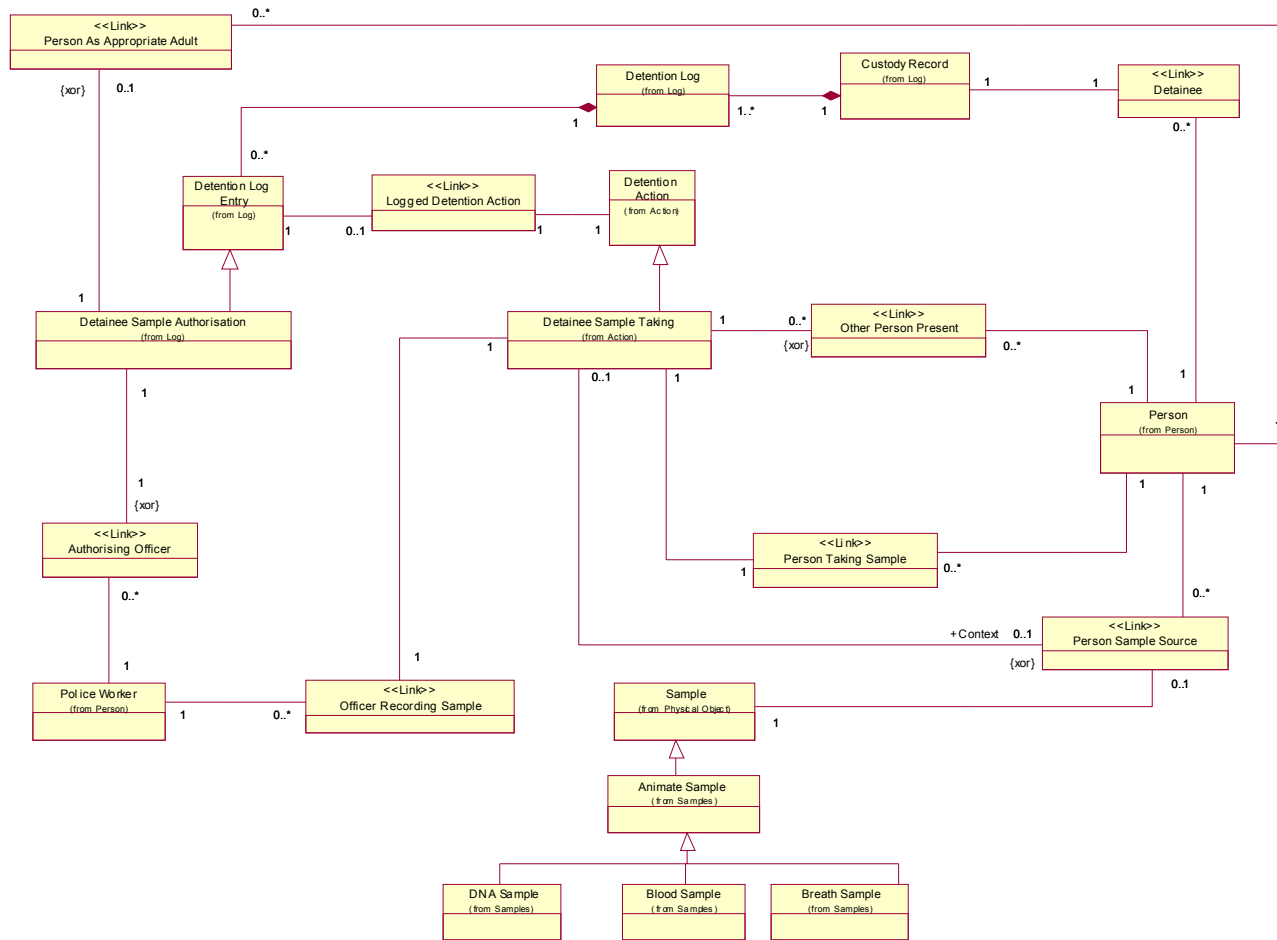


Figure 13: Samples