

Police Corporate Data Model (CorDM)

Community Safeguard Business Area View

REFERENCE: Police CorDM Community Safeguard Business
Area View

AUTHOR: Information Standards Team

VERSION NUMBER: 3.0

DATE: 30 November 07

© NPIA (National Policing Improvement Agency) 2007

All rights reserved. No part of this publication may be reproduced, modified, amended, stored in any retrieval system or transmitted, in any form or by any means, without the prior written permission of the National Policing Improvement Agency or its representative.

Product Control Page

Authors:	Information Standards Team	
Address:	National Policing Improvement Agency New Kings Beam House 22 Upper Ground London SE1 9QY	☎ 020 8358 5735 ✉ mail to: isg@npia.pnn.police.uk

Issue Control:		
Version	Date	Description
Version 1.0	31-07-2003	Publication in CorDM version 1
Version 2.0	30-11-2006	Updated to new PITO template
Version 3.0	30-11-2007	Updated to Version 7 standards

1 PURPOSE

The purpose of this document is to describe and diagram the data required to support the business areas of Protect Children and Deal with Domestic Violence. The business area also encompasses Hate Crime, Vulnerable Adults and Missing from Home and the scope may eventually be extended into these topics.

The name Community Safeguard has been used as a generic term to cover these activities.

2 BACKGROUND

The police are required to proactively manage and track the progress of a case file and provide a common information repository for all child abuse cases within a force. The scope also is coming to cover Domestic Violence and Vulnerable Persons. These are all closely linked and interdependent.

As a result the views represented, show a very large overlap between them.

3 REFERENCES

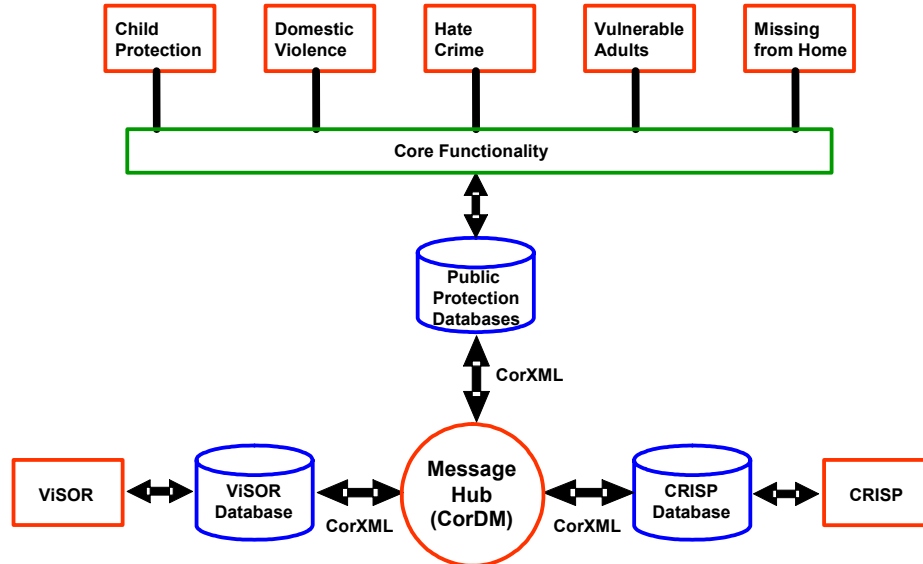
Case Administration & Tracking System (CATS) – operated by Nottinghamshire, Leicestershire, Bedfordshire Constabularies (plus about 10 others).

CEDAR – operated by Thames Valley Police.

Vulnerable Victims Database (VIVID) – operated by West Yorkshire Police.

4 Overview

4.1 Application Structure



The diagram represents the medium term proposal for the CATS suite of applications (extending the CRISP and ViSOR interfaces into the future Hub).

The 'Core Functionality' represents the common functionality required to support the five applications.

Although this is not always the architecture in the forces, it does serve to show the principles and target environment for this business area.

The common goal of the forces is to integrate these functions within their force and to share the data across other applications and forces.

The application systems record the data required by the business areas.

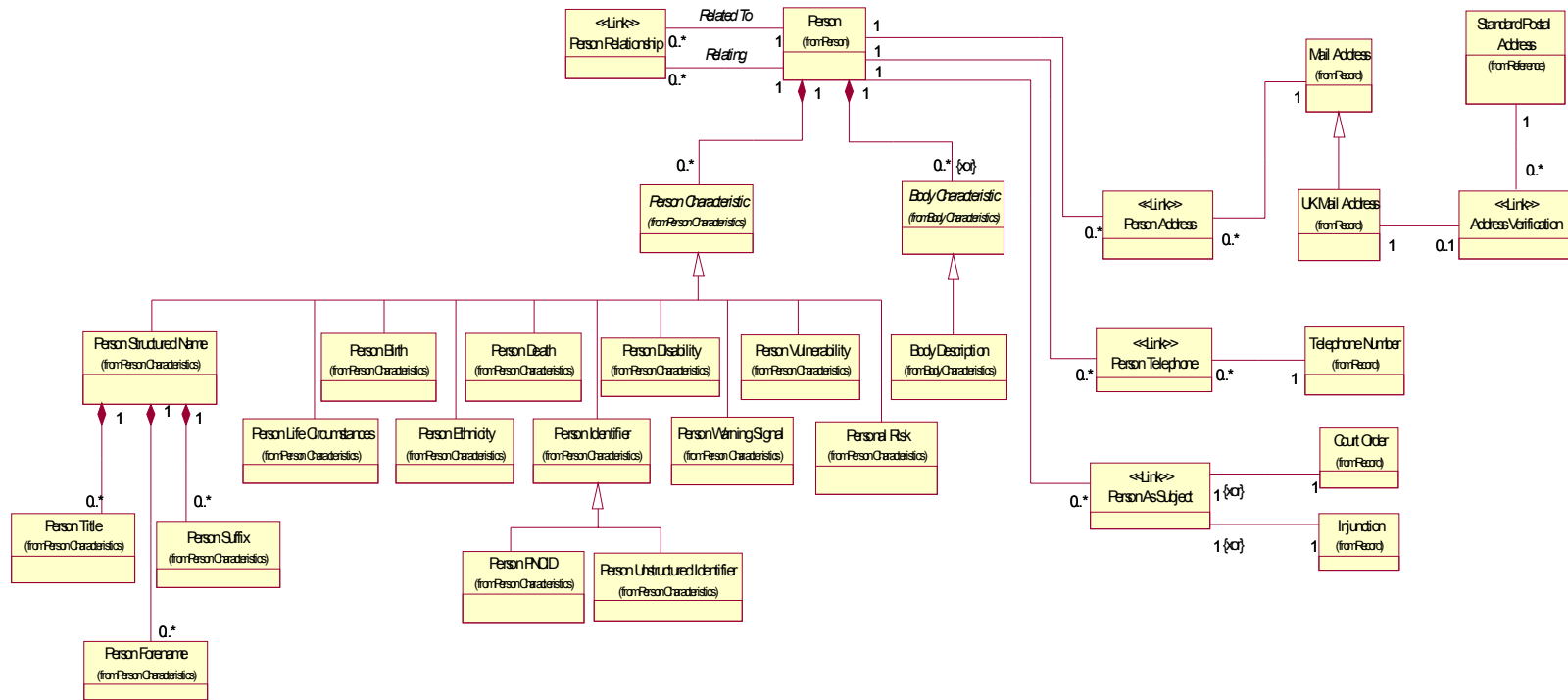
5 Data Model Business Area Views

5.1 Person Characteristics

This diagram limits itself to the direct characteristics and basic data relevant to the Person.

The legal instructions associated with a Person have also been included.

5.1.1 Diagram



Person Details

5.2 Protect Children

This view illustrates the data to support the Protect Children business area. The main foci of this diagram are Person and Incident.

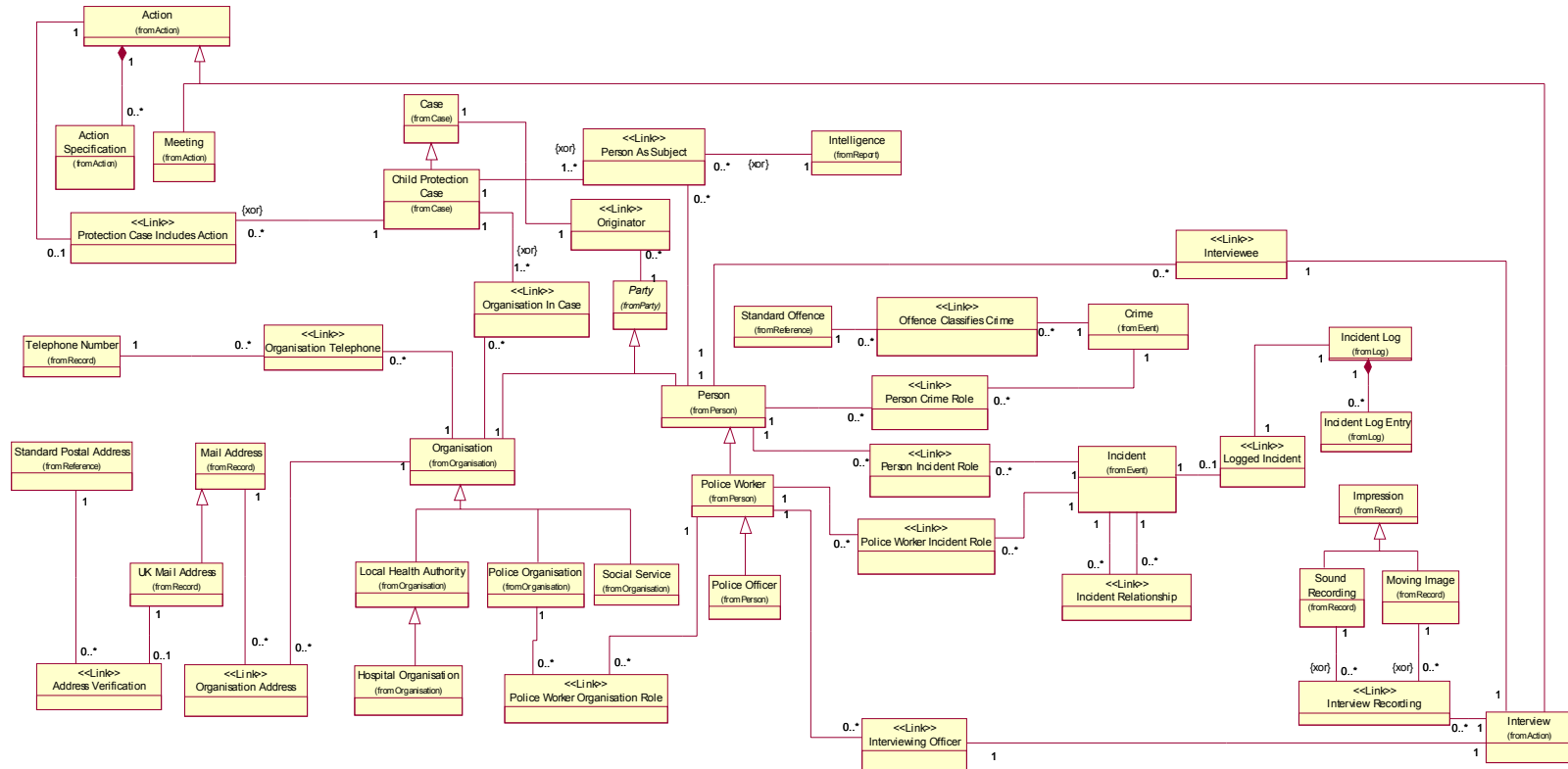
The main thrust of the Protect Children activity is the handling of Incidents reported by various persons and organisations.

Incidents, concerns, complaints etc. are reported to the police Child Protection unit where resources are allocated to handle the Incident. The incident is tracked and reported on through to resolution.

The view also shows the handling of the various recordings stored on various media e.g. interview videos.

The Child Protection Register may not be the responsibility of the Child Protection department and maybe another specialist police department and / or the Social Services department. It is not kept as a national register but is kept on a Social Services organisational basis.

5.2.1 Diagram



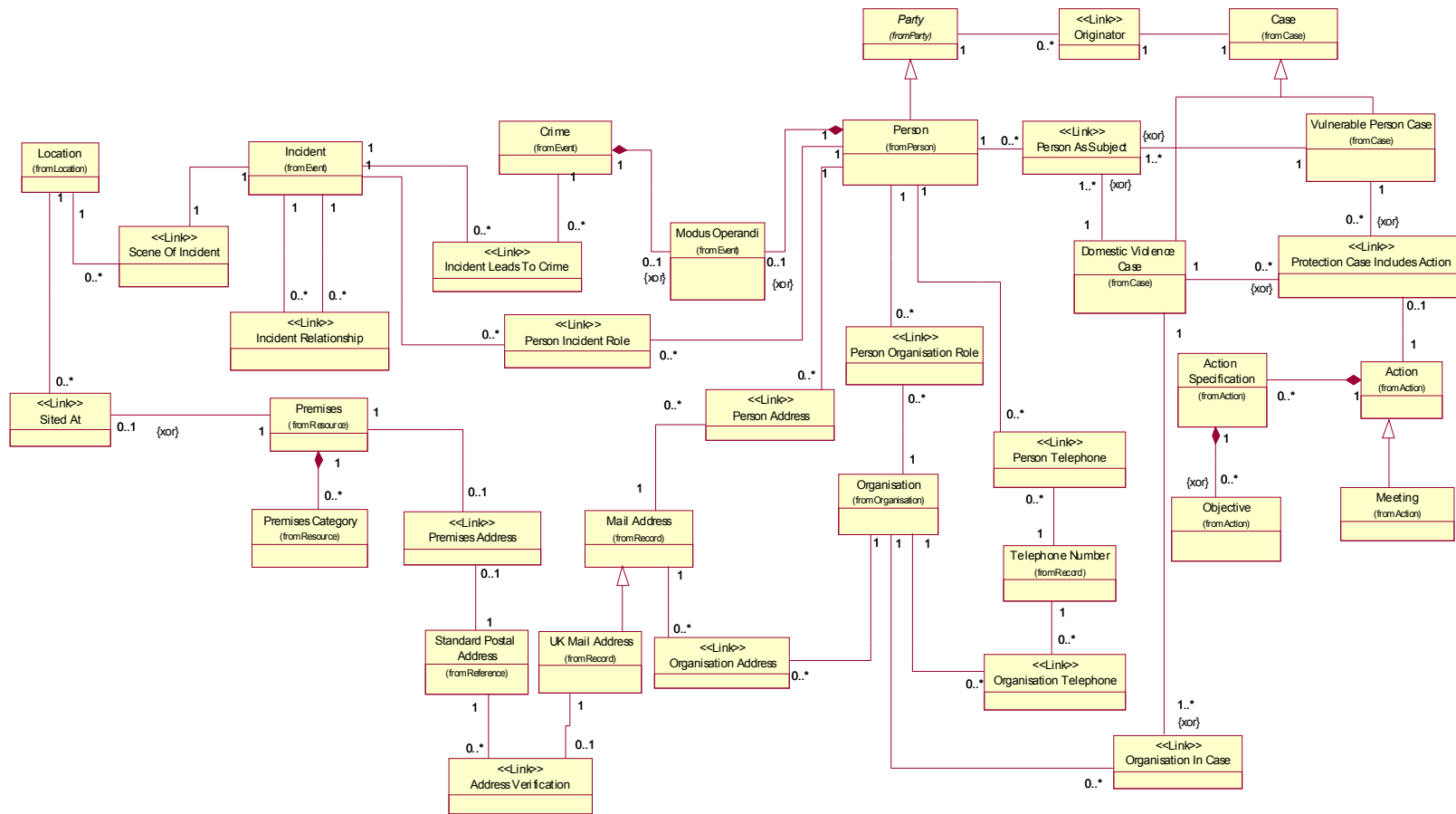
Protect Children

5.3 Deal with Domestic Violence

This view illustrates the data to support the Deal with Domestic Violence business area.

As for Protect Children, the main foci are the Persons and the Incidents that are handled by the department. There are particular emphases on linking various Incidents to the persons who might be vulnerable at the place of the Incident.

5.3.1 Diagram



Deal with Domestic Violence