

Police Corporate Data Model (CorDM)

Liquor Licence Business Area View

REFERENCE: Police CorDM Liquor Licence Business Area
View

AUTHOR: Information Standards Team



VERSION NUMBER: 7.0

DATE: 30 November 07

© NPIA (National Policing Improvement Agency) 2007

All rights reserved. No part of this publication may be reproduced, modified, amended, stored in any retrieval system or transmitted, in any form or by any means, without the prior written permission of the National Policing Improvement Agency or its representative.

Product Control Page

Authors:	Information Standards Team	
Address:	National Policing Improvement Agency New Kings Beam House 22 Upper Ground London SE1 9QY	 020 8358 5735  mail to: isg@npia.pnn.police.uk

Issue Control:		
Version	Date	Description
Version 1.0	31-07-2003	Publication in CorDM version 1
Version 2.0	31-12-2003	Updated to Version 2 standard
Version 3.0	31-08-2004	Updated to Version 3 standard
Version 4.0	31-03-2005	Updated to Version 4 standard
Version 5.0	30-11-2005	Updated to Version 5 standard
Version 6.0	30-11-2006	Updated to new PITO template
Version 7.0	30-11-2007	Updated to Version 7 standard

1 PURPOSE

This paper provides a model of the functional area of Liquor Licensing within the CorDM.

2 BACKGROUND

The model and object catalogue for Liquor Licences have been developed using the following sources of information

- Blackstone's Police Manual - General Police Duties
- South Wales Police Officer input
- "Advice to Licensees" published by South Wales Police

3 DATA MODELLING NOTES

The business area is presented in two diagrams.

The first to show details of the licence applicant and holder.

The other to show the details of the licence type, conditions and premises.

NOT PROTECTIVELY MARKED
Liquor Licence Business Area View

CorDM V7

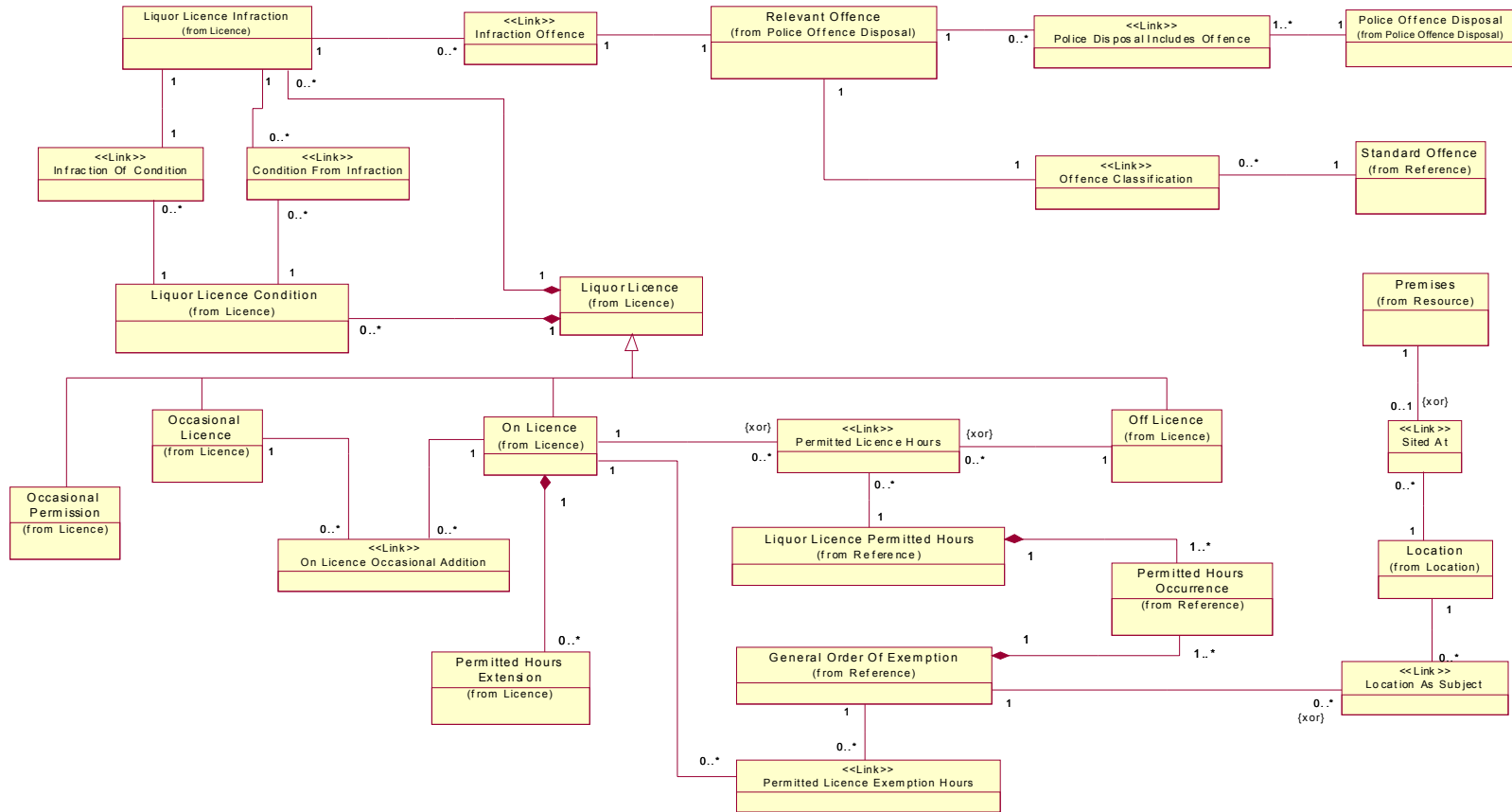


Figure 2: Liquor Licence