

Police Corporate Data Model (CorDM)

Manage Case File Business Area View

REFERENCE: Police CorDM Manage Case File Business Area
View

AUTHOR: Information Standards Team



VERSION NUMBER: 7.0

DATE: 30 November 07

© NPIA (National Policing Improvement Agency) 2007

All rights reserved. No part of this publication may be reproduced, modified, amended, stored in any retrieval system or transmitted, in any form or by any means, without the prior written permission of the National Policing Improvement Agency or its representative.

Product Control Page

| | | |
|-----------------|--|--|
| Authors: | Information Standards Team | |
| Address: | National Policing Improvement Agency New Kings Beam House 22 Upper Ground London SE1 9QY |  020 8358 5735  mail to: isg@npia.pnn.police.uk |
| | | |

| Issue Control: | | |
|-----------------------|-------------|--------------------------------|
| Version | Date | Description |
| Version 1.0 | 31-07-2003 | Publication in CorDM version 1 |
| Version 2.0 | 31-12-2003 | Updated to Version 2 standard |
| Version 3.0 | 31-08-2004 | Updated to Version 3 standard |
| Version 4.0 | 31-03-2005 | Updated to Version 4 standard |
| Version 5.0 | 30-11-2005 | Updated to Version 5 standard |
| Version 6.0 | 30-11-2006 | Updated to Version 6 standard |
| Version 7.0 | 30-11-2007 | Updated to Version 7 standard |

1 PURPOSE

This model covers the Police function of preparing a prosecution file.

2 BACKGROUND

The scope of the Manage Case File model is similar to that of the NSPIS Case Preparation application except that Audit has not been included since it is to be covered by a separate business area.

3 DATA MODELLING NOTES

The Case File function has been broken down into a number of key subject areas in order to present an easily understandable model.

| Figure No | Title | Notes |
|------------------|-----------------|--|
| 1 | Person | Shows the typical data held for people involved in a case. |
| 2 | Organisation | Presents the data held for organisations involved in a case and includes police workers. |
| 3 | Vehicle | Gives the data held about vehicles involved in a case and their ownership |
| 4 | Case Links | Shows the offences included in the case and how other classes are related to them. |
| 5 | Case Activities | Presents the modelling of activities involved in case preparation |
| 6 | Case Material | Describes the data objects required to model case material |
| 7 | Court Results | Deals with results from court hearings |
| 8 | Court Bail | Shows the data related to court bail |
| 9 | Case Roles | Shows the roles played by Parties including Person, Organisation & Police Worker in a case and an offence. |

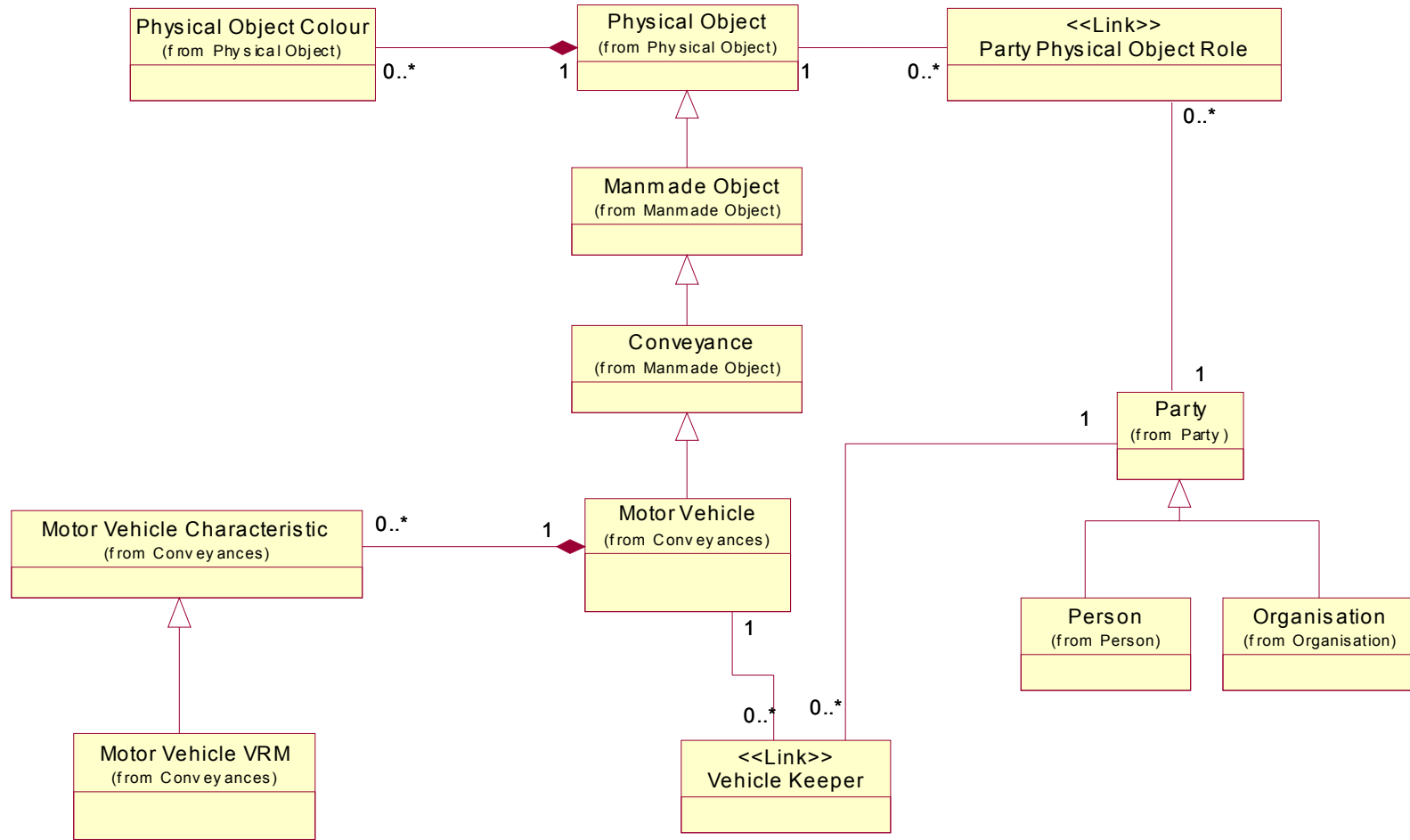


Figure 3: Vehicle

Manage Case File Business Area View

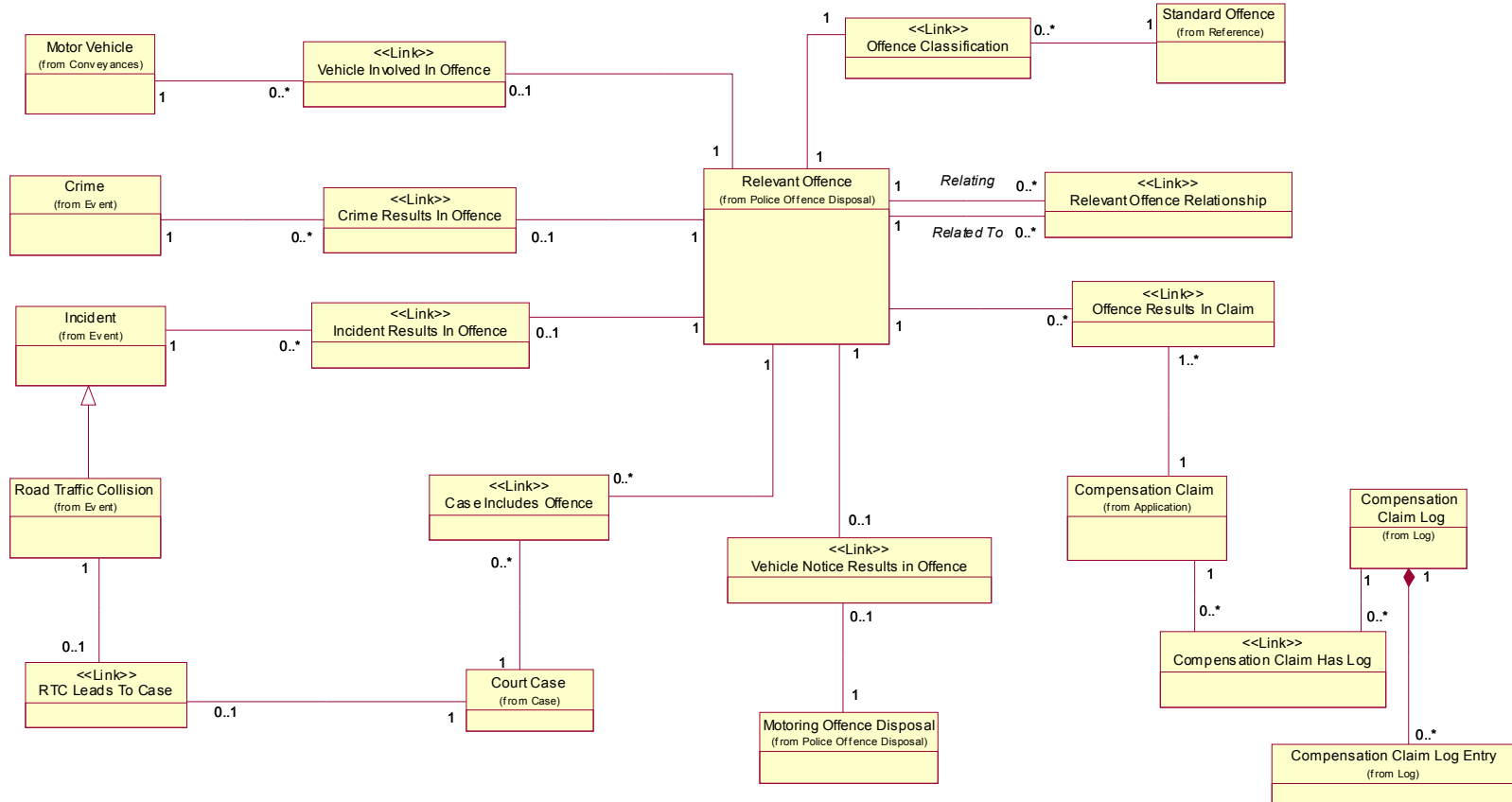


Figure 4: Case Links

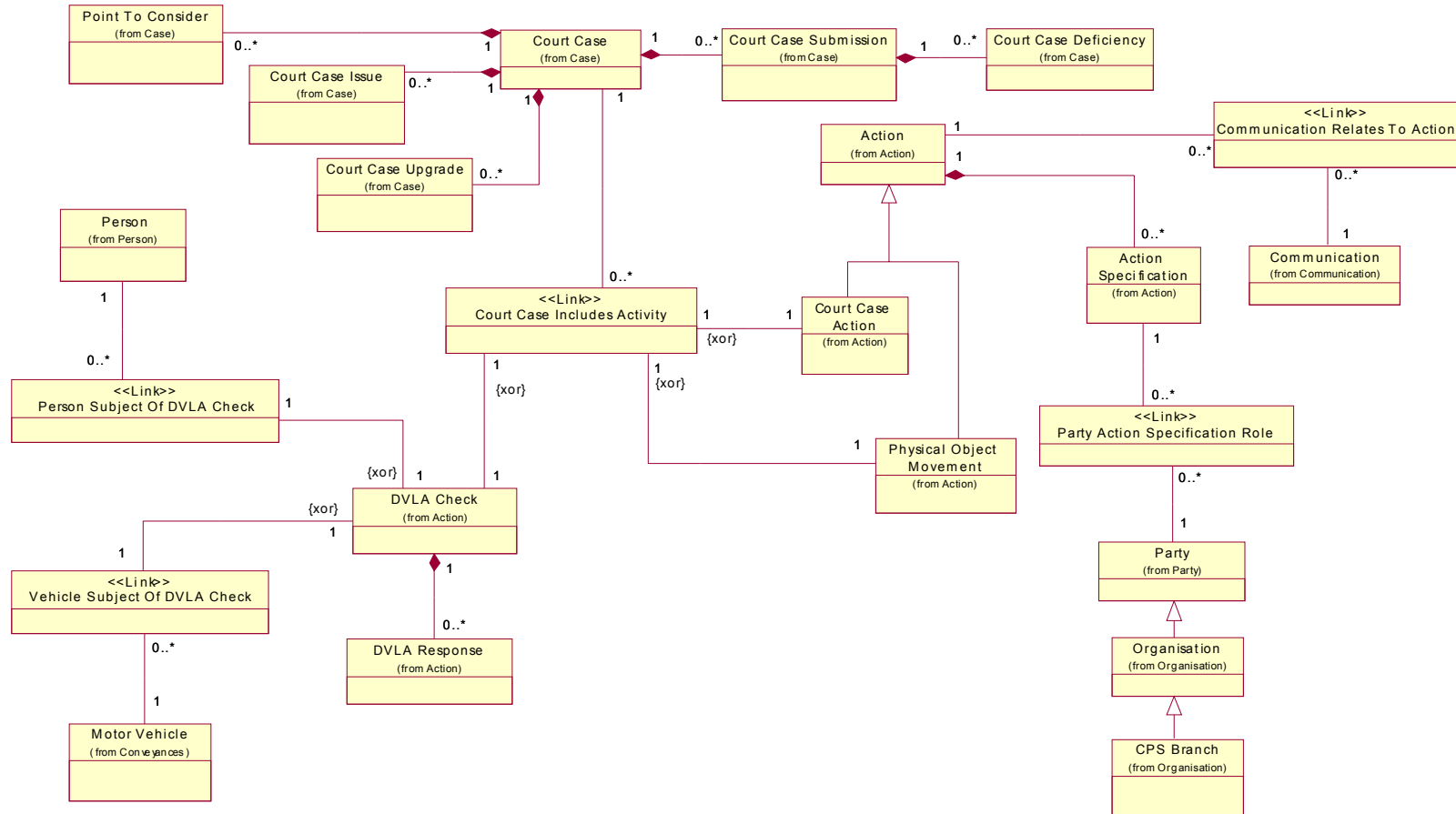


Figure 5: Case Activities

Manage Case File Business Area View

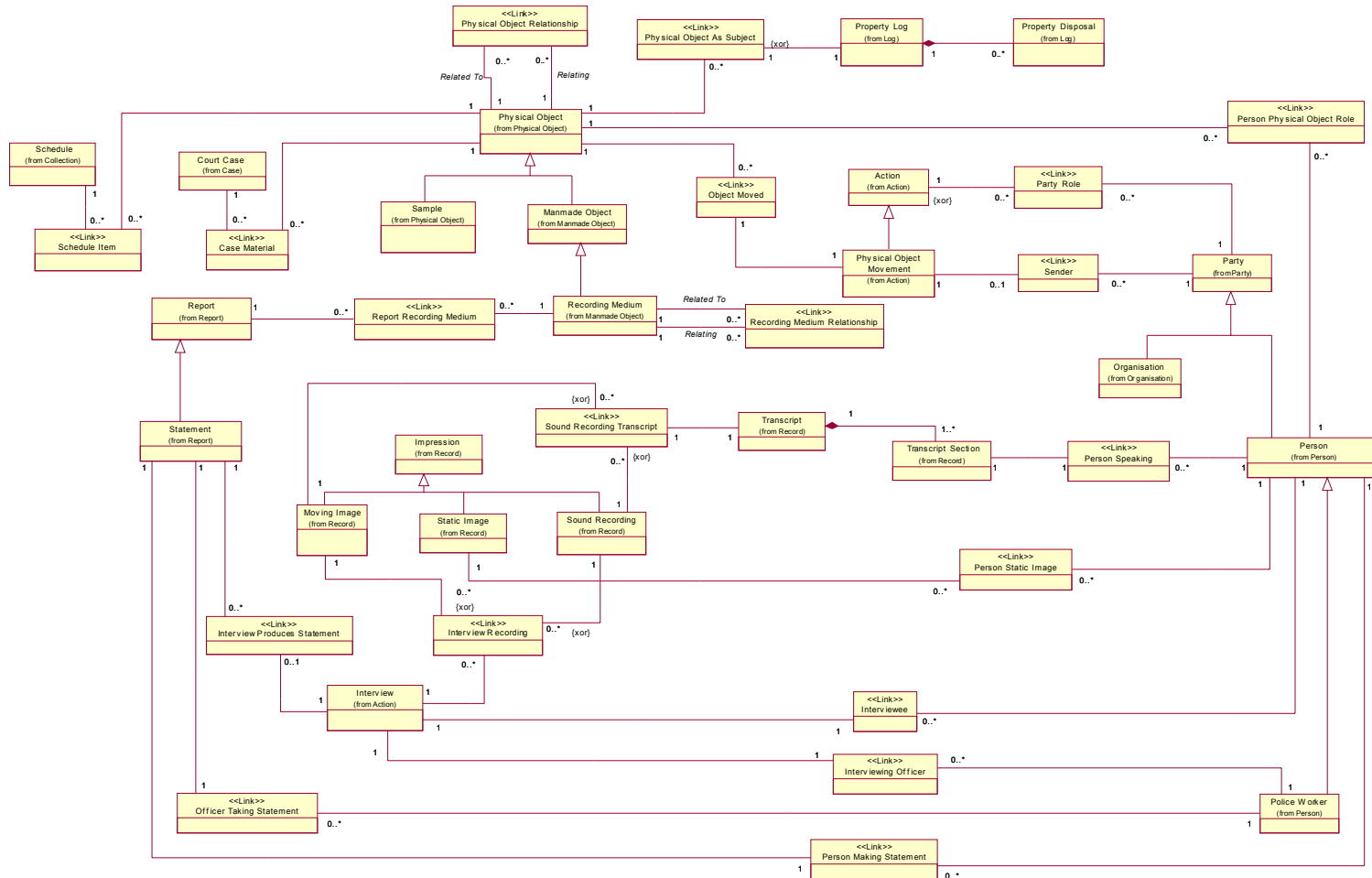


Figure 6: Case Material

Manage Case File Business Area View

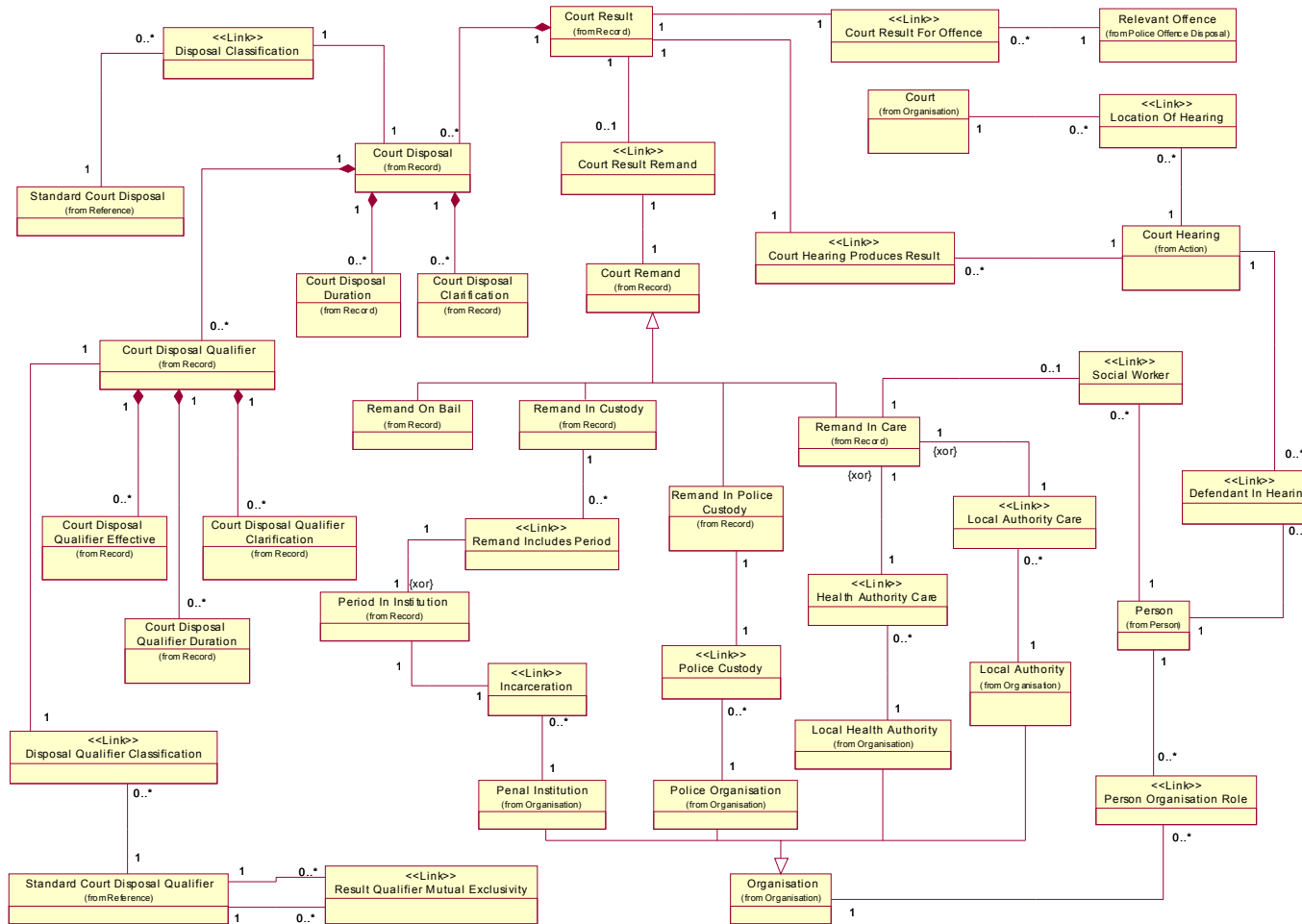


Figure 7: Court Results

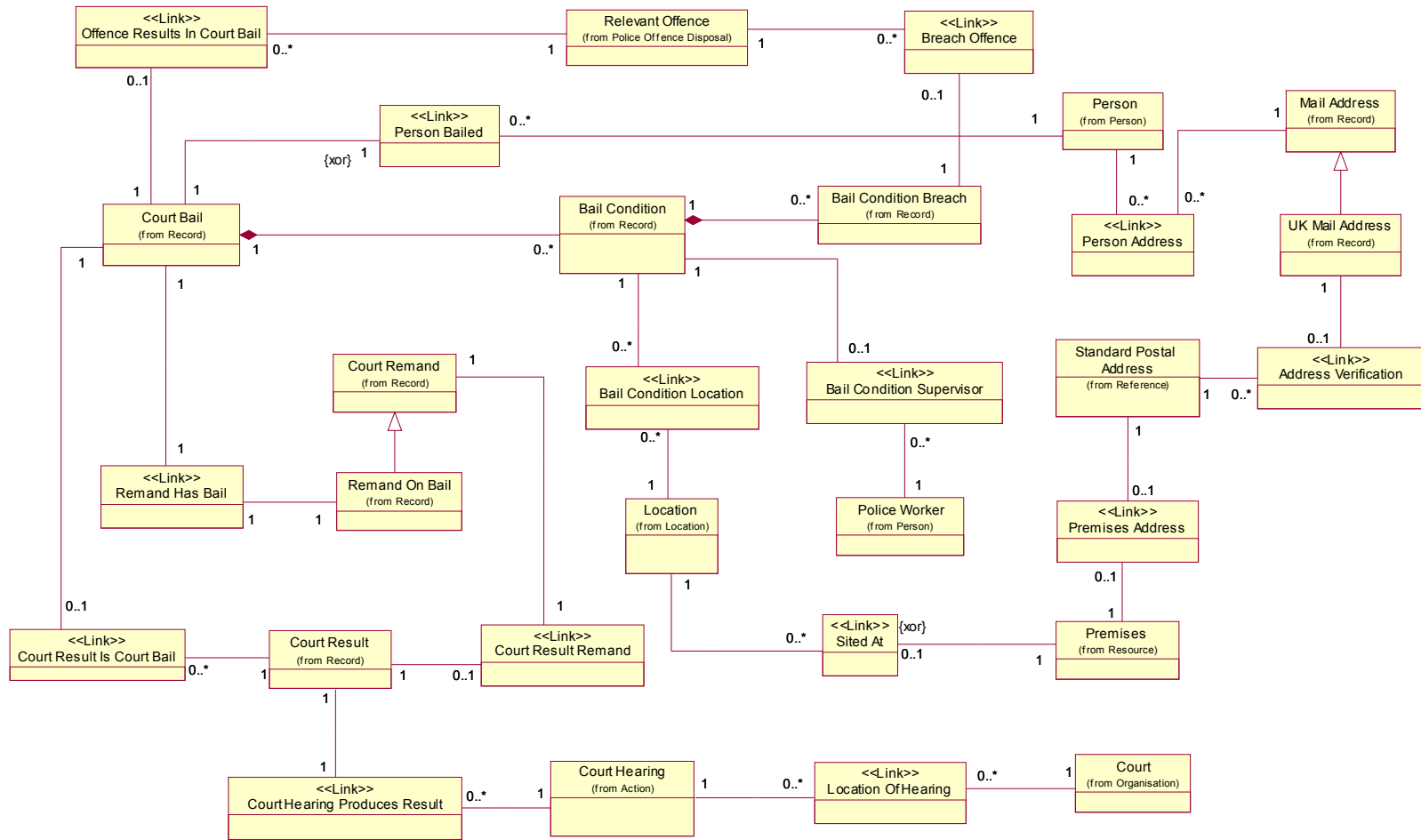


Figure 8: Court Bail

